

Selling 86 Lots on Monday

December 5th

12:00 Noon Sharp!

Eichacker Sale Facility

Salem, South Dakota



Dakota Made
2016

SIMMENTAL
SIMANGUS™
RED ANGUS

Sale Hosts:
Eichacker Simmentals

Guest Breeders:
Healy Simmental
Lehrman Family Simmental
Andersland Simmentals

We invite you to the Dakota Made Sale on December 5th!

On behalf of the consignors of the Dakota Made Sale, I would like to Welcome you to the farm on Monday December 5th. We are located southeast of Salem and just 2 miles off I-90. One of the hardest things to decide is which females will go on the sale, especially when we as consignors are trying to maintain and build our own herds. We know some of these females are going to raise a bull that will lead off a sale or a heifer that could be a potential donor. With that, I would like to welcome two new consignors to the Dakota Made Sale. First would be Lehrman Family Simmentals, Dan & Vicki Lehrman and his family are from the Spencer, SD area, only a short 20 mile drive gets you to their front door. After years of building a herd, I believe this is the Lehrman's first venture in selling the fruits of their labor in a production sale, but patience has paid off because they are a nice set of cattle. Second, we have Andersland Simmentals, Bruce & Beth Andersland are from southeast Minnesota. They are not new to the Simmental breed, but Beth said this is their first time consigning to a production sale. If you are looking for cattle with a great disposition, look no further as the Andersland cattle have all been halter broke at some point in their life. Also a great new addition, the Andersland's are consigning 9 or 10 halter broke open heifers. Keep in mind, we are hosting the 2017 North Central Regional Simmental Show right here in Huron, SD this coming summer, June 28-July 2, so if you're in need of a show heifer, come take a look.

Last year, I shared a story about our experience at the National FFA Convention on how refreshing it was to see 60,000 clean cut, respectable and polite kids – our youth, the future of agriculture in one place. I would like to add another chapter. We were fortunate enough to attend this past National FFA Convention as well. With all the hoopla and disrespect (in my opinion) in the sports arena, mainly the NFL or the Colin Kaepernick followers taking a knee during the National Anthem, Cathy & I were attending a session one afternoon during the convention. It was in the big basketball arena where the Indiana Pacers play, so there were a lot of FFA kids there. The session was about over, so many of the kids were starting to file out and leave. One of the last things they did was the Pledge of Allegiance. I mean to tell you, all these kids going up the steps, stopped dead in their tracks, turned around, put their hand over their heart and didn't move till it was over. It would have been very easy for them to continue on to the corridor like they didn't hear it. Our youth in agriculture get it, unlike a few NFL players that make millions. I used FFA as an example, but I see many of the same qualities in our juniors that participate in our state, regional & national Simmental shows.

Just like the last few years, our sale is on a Monday, so if you are in the area for the Jewels of the Northland Sale on Saturday, come down Sunday to view the cattle and stay around for some great hospitality about sundown Sunday evening.

Thanks for your time and interest in our cattle, if you have any questions, please feel free to contact any of the consignors or the sales staff with any questions.

Thanks,
The Dakota Made Crew

EICHACKER SIMMENTAL

Steve & Cathy Eichacker
25446 445th Ave, Salem, SD 57058
605-425-2391 Home
605-421-1152 Cell
Paul Grace, Herdsman 605-261-5851



HEALY SIMMENTAL

Kevin Healy Family
29621 441st Ave, Irene, SD 57037
Home 605-263-3876 • Cell 605-660-3880



LEHRMAN FAMILY SIMMENTAL

Dan & Vicki Lehrman
Spencer, SD
605-530-5903
Luke Lingemann,
Herdsman 605-630-9325



ANDERSLAND SIMMENTAL

Bruce & Beth Andersland
Emmons, MN
507-402-1095

SALE DAY PHONES:

605-425-2391
605-421-1152
605-261-5851
612-805-7405
406-599-2395
612-805-8225

Professional Sale Management:

Eberspacher
ENTERPRISES INC.

Val & Lori Eberspacher
Office 507-532-6694
Cell 612-805-7405
Kelly Schmidt 406-599-2395
sales@ebersale.com
www.ebersale.com

MONDAY, DECEMBER 5TH • 12:00 NOON

Eichacker Sale Facility

Facility located at the farm at 25446 445th Avenue, Salem, SD 57058

Dakota Made

PRODUCTION SALE 2016

THIS IS A VIDEO SALE ★ ★ ★

NO CATTLE WILL GO THROUGH THE RING

Sale Schedule:

SATURDAY, DECEMBER 3RD All Day Viewing of Sale Cattle
 SUNDAY, DECEMBER 4TH All Day Viewing of Sale Cattle
 5:00-7:00 pm.Pre-sale Social at Sale Site - Everyone Welcome!
 MONDAY, DECEMBER 5TH
 8:00 amViewing of Sale Cattle
 11:00 am Complimentary Lunch
 12:00 NOON DAKOTA MADE PRODUCTION SALE 2016

SELLING AN EXCEPTIONAL SELECTION OF SIMMENTAL, SIMANGUS™ AND RED ANGUS CATTLE

SALE HEADQUARTERS:

Quality Inns & Suites 605-336-1900
 6410 N. Granite Lane, Sioux Falls - North of the Flying J Truck Stop and 35 mi. from sale site. Room rate of \$89.95. Block held until 11/27 under Dakota Made.
Other Area Motels: Best Western U-Bar Motel 605-296-3466
 130 W. Ash St., Canistota, SD 57012 - 10 mi. from sale site.
 Home Motel, Salem, SD 605-425-2828 or 2818

AIRPORTS: Joe Foss Field, Sioux Falls, SD - located 35 miles from sale site
 Serviced by United, Delta & Northwest Airlines (evening flights available)

VIDEO AUCTION: This simply means that the sale offering will be there for your visual appraisal prior to the sale and then the big screens will be playing during the sale while you enjoy the great South Dakota hospitality in a warm sale facility.



UPDATES & SALE ORDER: Additional information and sale order can be found on the Eberspacher Enterprises Inc. Facebook page. Like us and receive the updates automatically. Download the EE smart phone app to stay current!

TERMS & CONDITIONS: All cattle sell under the Terms & Conditions of the American Simmental Association. Terms available sale day. Checks payable to Eberspacher Enterprises Inc.

ANNOUNCEMENTS: Announcements made sale day and from the auction block during the sale take precedence over printed material associated with this sale. Anyone attending this sale attends at their own risk. Breeders or any of the sale force will not be responsible for any personal injury attending this sale.

EPDs: Please note that EPDs may change from the time the sale catalog is printed until registration papers are transferred. EPDs listed are Fall 2016 numbers.

TRUCKING: Sale management and breeders will assist in moving cattle at the most economical trucking possible. Trucking will be coordinated with the Jewels of the Northland Sale, Clara City, MN on Dec. 3rd, 2016.

LIVESTOCK INSURANCE: Insurance will be available sale day through sale management and Jame Secondino, American Livestock Insurance, phone 765-208-0956.

NEW FOR 2016...

View & Place Bids Online at: **LiveAuctions TV**

For more info, call Brad Fahrmeier at 816-392-9241 or Amanda Eberspacher Hilbrands 507-828-7089.



DIRECTIONS TO SALE SITE:

Eichacker Simmentals, 25446 445th Ave., Salem, SD. Take Exit 368 (Canistota) on Interstate 90 in South Dakota: Go 2 mi. North, Eichacker Farm is on the East side of road. From Salem, SD, Hwy. 81 & 38 intersection, go 4 mi. East and 1 1/2 mi. South. Farm is on East side of road.

AUCTIONEER: Col. Tracy Harl 402-469-3852

MARKETING AGENTS:

Val Eberspacher, EE Sales 612-805-7405
 Kelly Schmidt, EE Sales 406-599-2395
 Dustin Carter, AgriMedia 712-898-9972
 Jeff Kapperman, AgriMedia 605-940-5104
 Jim Scheel, Cattle Business Weekly 605-545-1521
 Doug Parke, Parke Livestock 859-421-6100
 Colton Buus, ASA Rep 605-214-3532



Scan this code with your smart phone to view catalog online.



Pedigree for Lots 1 & 1A:
Remington On Target 2S
Remington Lock N Load 54U
Bar15 Miss Knight 78E-15G
DCC New Look 101

EST51
ESP85

What a great opportunity to buy and own a Lock N Load daughter here as Lock N Load semen is a thing of the past, unless you have some stashed away. These two heifers are out of our T51 donor who has had seven natural and 25 embryo calves for us. They are also a full sister to ES Buckshot, the \$40,000 bull purchased by Healys & Goekens in 2015. T51 is back in the donor pen this fall after weaning a tremendous Load Limit bull calf. She is a square made powerful cow that has excellent feet and legs and has a beautiful udder. One of the heifers is a blaze face, one is solid black. One is bred to Aftershock, the other to Dew It Right, the choice is yours.

1

ES C110

Black Baldy Dbl Polled 3/4 SM 1/4 AN ASA#3025457

A.I. Sire: CLRS After Shock 604 A on 5-10-16 • Due: 2-17-17 • Safe
EPDs: 12 .95 66 110 .28 8 25 58 * 12.5
Carcass: 37.05 -.35 .21 -.04 1.09 131 74
Pasture Sire: ES CA118 from 6-10 to 7-18-16

BD: 2-6-15 Tattoo: C110 Adj BW: 74 ET Adj WW: 564

CE	BW	WW	YW	ADG	MCE	Milk	MWW	Stay	DOC	CW	YG	Marb	BF	REA	API	TI
10	1.4	63	109	.29	4	23	55	*	12.1	37.8	-.38	.05	-.052	1.10	107	66

1A

ES C111

Black Dbl Polled 3/4 SM 1/4 AN ASA#3025459

A.I. Sire: Welsh Dew It Right 067T on 5-30-16 • Due: 3-9-17 • Safe
EPDs: 13 .9 63 93 .19 8 18 50 * 13.3
Carcass: 26.75 -.40 .11 -.06 1.00 127 69
Pasture Sire: ES CA118 from 6-10 to 7-18-16

BD: 2-9-15 Tattoo: C111 Adj BW: 107 ET Adj WW: 574

CE	BW	WW	YW	ADG	MCE	Milk	MWW	Stay	DOC	CW	YG	Marb	BF	REA	API	TI
10	1.4	63	109	.29	4	23	55	*	12.1	37.8	-.38	.05	-.052	1.10	107	66



ES Buckshot, \$40,000
Full Brother



ES BT51-2, Full Brother



ES BT51-1, Maternal Brother



ES B92, relation



2

ES C105

Black Polled 5/8 SM 3/8 AN ASA#3025448

Mr. NLC Upgrade U8676
R&R Chamberlain X744
R&R Miss Traveler T744
B C Lookout 7024
HS Look At Me X381N
HHSF Black Glitter

C105 comes to you right off the top of the heifer pen. She is a sister out of the best and most consistent flushes ever produced out of X381N or called "Jewel" around here. When you combine the power of Chamberlain and the style and elegance of Jewel, you have a great cow prospect that ought to raise some herd bulls before her day is done. We had several full sisters calve last spring and man are they nice cows with beautiful udders.

A.I. Sire: W/C Lock Down 206Z on 5-11-16 • Due: 2-18-17 • Safe
EPDs: 12 .35 74 116 .27 4 17 53 * 11.05
Carcass: 39.3 -.19 .44 -.04 .60 132 80
Pasture Sire: ES CA118 from 6-10 to 7-18-16

BD: 2-10-15 Tattoo: C105 Adj BW: 97 ET Adj WW: 586

CE	BW	WW	YW	ADG	MCE	Milk	MWW	Stay	DOC	CW	YG	Marb	BF	REA	API	TI
7	3.2	73	107	.21	3	21	58	*	12.2	38.0	-.31	.40	-.077	.70	110	75



HS Look At Me X381N, Dam



ES BX381-5, Full Brother

3

ES C2

Black Dbl Polled 3/4 SM 1/4 AN ASA#3025266

BD: 1-30-15 Tattoo: C2 Adj BW: 68 Adj WW: 565

CE	BW	WW	YW	ADG	MCE	Milk	MWW	Stay	DOC	CW	YG	Marb	BF	REA	API	TI
18	-1.1	61	93	.2	10	33	63	*	12.0	23.9	-.30	.13	-.024	.94	143	70

CDI Ridgeline 32T
ES Ridgider YW3
ES W3
S A V 8180 Traveler 004
ES X78
ESP85

Long sided fancy fronted female here. Sired by ES Ridgider who has done an excellent job for Harts, and if you like power in a cow, her mother is an amazing, cow with lots of milk. She had an \$8,500 bull in last springs bull sale.

A.I. Sire: Hook's Broadway 11B on 5-10-16 •
Due: 2-17-17 • Safe
EPDs: 14 .05 63 96 .21 10 28 59 * 11.7
Carcass: 27.35 -.35 .29 -.03 1.05 145 76
Pasture Sire: ES CA118 from 6-10 to 7-18-16



ES BX78, Maternal Brother



4

ES C6

Black Dbl Polled 3/4 SM 1/4 AN ASA#3025312

BD: 2-7-15 Tattoo: C6 Adj BW: 86 Adj WW: 619

CE	BW	WW	YW	ADG	MCE	Milk	MWW	Stay	DOC	CW	YG	Marb	BF	REA	API	TI
8	1.8	58	93	.22	6	24	52	*	11.6	28.4	-.31	.00	-.052	.78	99	60

HL Grid Buster P51
HL Game Plan R42X
JDJ Queens Ransom
Duff Encore 702
ES X95
Miss RS28S

A female with a lot of rib shape just as you would expect out of a Duff Encore mother. An exciting mating, AI bred to ES Load Limit, our high selling bull 3 years ago, going to Tyler Glover in Oklahoma.

A.I. Sire: ES Load Limit AW9
on 5-9-16 • Due: 2-16-17 • Safe
EPDs: 11 .15 60 98 .24 7 20 50 * 11.9
Carcass: 28.75 -.35 .18 -.06 .86 121 68
Pasture Sire: ES CA118 from 6-10 to 7-18-16



5

ES C8

Black Polled 3/4 SM 1/4 AN ASA#3025393

BD: 2-9-15 Tattoo: C8 Adj BW: 64 Adj WW: 551

CE	BW	WW	YW	ADG	MCE	Milk	MWW	Stay	DOC	CW	YG	Marb	BF	REA	API	TI
7	.6	57	86	.18	6	21	49	*	10.8	22.0	-.32	.14	-.038	.84	109	66

HSF Better Than Ever
GLS New Direction X184
GLS N6
TNT Axis X307
ES A61
ES X52

When we get a commercial bull customer looking for trouble free genetics, I tell them to take a look at the New Direction cattle. They calve good, good disposition, just don't seem to have any holes.

Pasture Sire: ES CA118 from 6-10 to 7-18-16 • Observed 6-10 • Due: 3-20-17 • Safe
EPDs: 12 -.85 63 94 .19 9 20 52 * 10.55
Carcass: 24.25 -.29 .28 -.02 .88 129 71



6

ES C10

Black Dbl Polled Purebred ASA#3025350

BD: 2-11-15 Tattoo: C10 Adj BW: 72 Adj WW: 659

CE	BW	WW	YW	ADG	MCE	Milk	MWW	Stay	DOC	CW	YG	Marb	BF	REA	API	TI
17	-1.0	64	98	.21	9	35	67	*	12.4	27.0	-.46	-.03	-.055	1.21	139	72

CDI Ridgeline 32T
ES Ridgerider YW3
ES W3
KS Black Diamond W992
ES A111
EST51

This purebred heifer is out of a 1st calf heifer who is a litter mate to 3 bulls that were outstanding four years ago, all going to very reputable herds. Her grandam has raised several high sellers over the years and is still in our donor pen today. You ought to see her natural ES Load Limit bull she weaned this year "Wow"!

A.I. Sire: ES Load Limit AW9 on 5-9-16 • Due: 2-16-17 • Safe
EPDs: 16 -1.25 63 100 .24 9 26 57 * 12.3
Carcass: 28.05 -.42 .17 -.06 1.08 144 75
Pasture Sire: ES CA118 from 6-10 to 7-18-16



7 **ES C22**
Black Baldy Dbl Polled 3/8 SM 5/8 AN ASA#3025431

BD: 3-7-15 Tattoo: C22 Adj BW: 80 Adj WW: 624

CE	BW	WW	YW	ADG	MCE	Milk	MWW	Stay	DOC	CW	YG	Marb	BF	REA	API	TI
16	-8	63	96	.21	12	23	55	*	11.3	26.0	.02	.56	.031	.38	148	76

S A V Final Answer 0035
 Hart Final Answer
 Hart Mariah 8407
 JBS Mr. Focus 205U
 JBS Miss Focus 205 930A
 JBS Miss Force 745W

Heifers like this always attract a lot of attention. Moderate, big bellied with a little chrome on her face. Her dam came out of the Jim Benda herd. ES C22 is stacked with a lot of big time calving ease sires like Shear Force, Final Answer, and Mytty In Focus to give her a nice balanced set of EPDs and an API that puts her in the top 15% of the breed.

A.I. Sire: CCR Spartan 9124A
 on 5-11-16 • Due: 2-18-17 • Safe
 EPDs: 12 -.25 69 105 .23 11 26 61 * 14.7
 Carcass: 32.1 .00 .71 .03 .52 147 82
 Pasture Sire: ES CA118 from 6-10 to 7-18-16

8 **ES C14**
Black Dbl Polled Purebred ASA#3025356

BD: 2-16-15 Tattoo: C14 Adj BW: 75 Adj WW: 641

CE	BW	WW	YW	ADG	MCE	Milk	MWW	Stay	DOC	CW	YG	Marb	BF	REA	API	TI
11	-5	55	79	.15	7	23	50	*	9.9	16.1	-.29	.18	-.013	.86	125	67

PVF-BF BF26 Black Joker
 SS Ebony's Grandmaster
 SOSF Ebony's Joy L-123
 ES McCook YW90
 ES A6
 ESY30

This heifer had some nice ratios, BW 110, then maintained a 106 for WW. Not bad coming off a 1st calf heifer. Grandam is a very nice uddered 004 cow. They have been some of our favorites over the years.

A.I. Sire: W/C Lock Down 206Z on 5-10-16 • Due: 2-17-17 • Safe
 EPDs: 14 -1.5 64 102 .24 6 17 49 * 9.9
 Carcass: 28.35 -.18 .33 -.01 .68 134 74
 Pasture Sire: ES CA118 from 6-10 to 7-18-16



9 **ES C20**
Black Dbl Polled Purebred ASA#3025363

BD: 2-28-15 Tattoo: C20 Adj BW: 78 Adj WW: 561

CE	BW	WW	YW	ADG	MCE	Milk	MWW	Stay	DOC	CW	YG	Marb	BF	REA	API	TI
15	-2	60	86	.16	10	18	48	*	12.7	20.6	-.41	.24	-.063	.92	145	72

HTP SVF In Dew Time
 Welshs Dew It Right 067T
 SVF/NJC Senerita N29
 Ellingson Legacy M229
 ES A38
 ESW74

Every year when people go through the bulls the one sire group they ask about is the Dew It Right calves. They are attractive, sound, square made with a good hip. If you believe in cow families her grandam has hit it out of the park with 5 calves WW ratio of 105, then 3 bulls went on to ratio 115 for YW and have averages over \$6,000.00.

A.I. Sire: CCR Santa Fe 9349Z on 6-7-16 • Due: 3-16-17 • Safe
 EPDs: 13 -.9 59 85 .16 12 22 52 * 12.8
 Carcass: 18.75 -.31 .24 -.03 .85 143 72
 Pasture Sire: ES CA118 from 6-10 to 7-18-16





ES AX106,
Brother

10

ES C21

Black Dbl Polled 3/4 SM 1/4 AN ASA#3025329

BD: 3-7-15 Tattoo: C21 Adj BW: 86 Adj WW: 668

CE	BW	WW	YW	ADG	MCE	Milk	MWW	Stay	DOC	CW	YG	Marb	BF	REA	API	TI
7	2.3	77	122	.28	6	24	62	*	11.5	45.8	-.24	.47	-.052	.79	125	82

Mr. NLC Upgrade U8676
Gibbs 0689X Crimson Tide
SSF Black Lucy S727
J M G Net Profit 292
ES X106
ESS33

Her sire, Crimson Tide, is a sire that 3 years ago when I was driving the pastures to figure out what to AI to, every cow that had a Crimson Tide calf I wrote down to breed her back to Crimson Tide. Then this heifer weans off with a ratio of 111. Even better, her mother has a WW ratio of 110 of four calves and 2 bulls with a YW ratio of 107 and averaged \$6,000 in the sales.

A.I. Sire: ES Load Limit AW9
on 5-10-16 • Due: 2-17-17 • Safe
EPDs: 10 .4 69 112 .27 7 20 55 * 11.85
Carcass: 37.45 .31 .42 -.06 .87 135 79
Pasture Sire: ES CA118 from 6-10 to 7-18-16



ES B9, \$7,000 Full Sibling

11

ES C24

Black Dbl Polled 1/2 SM 1/2 AN ASA#3025286

BD: 3-10-15 Tattoo: C24 Adj BW: 70 Adj WW: 593

CE	BW	WW	YW	ADG	MCE	Milk	MWW	Stay	DOC	CW	YG	Marb	BF	REA	API	TI
14	-3.0	65	114	.3	7	21	53	*	10.7	33.7	-.09	.53	.037	.85	142	80

TNT Tuition U238
W/C United 956Y
Miss Werning 956W
GDAR Game Day 449
ES Z3
ES X48

Big time numbers on this gal, -BW, then way above average on growth. Throughout the country last spring many United daughters were noted as raising some of the top end bulls in bull sales, the commercial guys love them. Her full sister was a sale feature last fall going to Jim Benda.



A.I. Sire: Hook's Broadway 11B on 5-3-16 • Due: 2-10-17 • Safe
EPDs: 13 -.9 65 106 .26 8 21 54 * 11.05
Carcass: 32.25 -.25 .49 .00 1.01 142 78
Pasture Sire: ES CA118 from 6-10 to 7-18-16



12

ES C26

Black Dbl Polled 3/4 SM 1/4 AN ASA#3025400

BD: 3-12-15 Tattoo: C26 Adj BW: 85 Adj WW: 584

CE	BW	WW	YW	ADG	MCE	Milk	MWW	Stay	DOC	CW	YG	Marb	BF	REA	API	TI
6	2.0	71	111	.25	5	18	53	*	11.4	38.9	-.29	.29	-.064	.77	111	74

Mr. NLC Upgrade U8676
Gibbs 0689X Crimson Tide
SSF Black Lucy S727
Duff New Edition 6108
ESU74
ESK68

This heifer looks like she ought to raise some big, stout, high performance bull calves. Her grandam is the mother of ES Dakota, the old ABS bull that was noted to add pounds to his calves. Her dam, U74, has had three bulls and all made the cut for the bull sales.

A.I. Sire: CLRS Aftershock 604 A on 5-9-16 • Due: 2-16-17
EPDs: 10 1.25 69 110 .26 8 23 57 * 12.15
Carcass: 37.6 -.30 .33 -.05 .92 132 78
Pasture Sire: ES CA118 from 6-10 to 7-18-16



13

ES C25

Black Dbl Polled 5/8 SM 3/8 AN ASA#3025420

TNT Tuition U238
W/C United 956Y
Miss Werning 956W
KCC Saginaw 6W
ES Y71
WS Ms. Ava T48

It's no secret if you want to add some growth, a shot of United will do it. She ratioed 104 for WW and has a WW and YW EPDs that put her in the top 2% of the breed. Her mother is super attractive, long necked with a big hip. This heifer is no accident.

BD: 3-11-15 Tattoo: C25 Adj BW: 106 Adj WW: 630

CE	BW	WW	YW	ADG	MCE	Milk	MWW	Stay	DOC	CW	YG	Marb	BF	REA	API	TI
6	4.8	83	132	.31	5	12	54	*	10.4	55.3	-.10	.34	-.003	.86	104	76

Pasture Sire: ES CA118 from 6-10 to 7-18-16 • Observed 6-28
• Due: 4-7-17 • Safe
EPDs: 11 1.25 76 117 .26 8 16 54 * 10.35
Carcass: 40.9 -.18 .38 -.01 .89 131 78

14

ES C28

Black Dbl Polled 1/2 SM 1/2 AN ASA#3025257

BD: 3-13-15 Tattoo: C28 Adj BW: 79 Adj WW: 585

CE	BW	WW	YW	ADG	MCE	Milk	MWW	Stay	DOC	CW	YG	Marb	BF	REA	API	TI
13	1.5	72	119	.29	11	14	49	*	10.9	43.1	-.02	.42	.010	.55	139	76

S A V Iron Mountain 8066
S A V Angus Valley 1867
S A V May 2397
TNT Knock Out R206
ES X56
EST79

Sired by Angus Valley, one of the highest selling Angus bulls in 2012, whose daughters are gaining a reputation for their tremendous udder quality. On the bottom side of the pedigree are two sires known for their performance and their ability to add pounds to their calves.

Pasture Sire: ES CA118 from 6-10 to 7-18-16 • Observed 7-10 • Due: 4-19-17
• Safe
EPDs: 15 -.4 71 110 .25 11 17 52 * 10.6
Carcass: 34.8 -.14 .42 .00 .74 149



15

ES C29

Black Dbl Polled Purebred ASA#3025303

BD: 3-13-15 Tattoo: C29 Adj BW: 80 Adj WW: 638

CE	BW	WW	YW	ADG	MCE	Milk	MWW	Stay	DOC	CW	YG	Marb	BF	REA	API	TI
8	1.6	80	113	.21	10	17	57	*	13.4	38.8	-.24	.43	-.015	.98	139	84

Triple C Singletary S3H
CCR Cowboy Cut 5048Z
CCR Ms. 4045 Time 7322T
TNT Axis X307
ES Z74
ES W31

Rumor has it that these Cowboy Cut females are pretty nice. This will be our first year to calve any, I hope the rumor is true. You gotta like her ratios, 104 for BW, then 106 for WW.

A.I. Sire: CCR Santa Fe 9349Z on 5-7-16 • Due: 2-14-17 • Safe
EPDs: 10 .0 69 98 .19 11 22 56 * 13.15
Carcass: 27.85 -.22 .34 .00 .87 141 78
Pasture Sire: ES CA118 from 6-10 to 7-18-16





16 **ES C34**
Black Brockle Dbl Polled 1/2 SM 1/2 AN ASA#3025267

BD: 3-15-15 Tattoo: C34 Adj BW: 97 Adj WW: 634

CE	BW	WW	YW	ADG	MCE	Milk	MWW	Stay	DOC	CW	YG	Marb	BF	REA	API	TI
9	2.1	65	103	.24	8	19	51	*	11.6	34.4	-.21	.45	-.048	.59	125	72

Remington Lock N Load 54U
 ES Load Limit AW9
 ES W9
 J M G Net Profit 292
 ES X45
 ESP27

A.I. Sire: Hook's Yellowstone 97Y
 on 5-1-16 • Due: 2-8-17 • Safe
 EPDs: 12 .8 68 103 .22 10 22 56 * 11.6
 Carcass: 32.1 -.29 .42 -.05 .79 143 78
 Pasture Sire: ES CA118 from 6-10 to 7-18-16



ES AX45, Brother



ES ZX45, Brother

Definitely one of the farm favorites here. Doesn't hurt that she has chrome on her face. But she is more than just a pretty picture. Her sire, ES Load Limit, was our high selling bull in 2014. There are also a few other bred heifers bred to him in the sale. Her dam is super nice with a good udder and has a WW ratio of 106 on her first 4 calves, two of which were picture bulls and sold for \$5,000 each.

17 **ES C32**
Black Dbl Polled 3/4 SM 1/4 AN ASA#3025374

BD: 3-15-15 Tattoo: C32 Adj BW: 84 Adj WW: 613

CE	BW	WW	YW	ADG	MCE	Milk	MWW	Stay	DOC	CW	YG	Marb	BF	REA	API	TI
10	1.7	76	114	.24	8	21	59	*	12.4	40.1	-.17	.60	-.004	.88	145	85



Triple C Singletary S3H
 CCR Cowboy Cut 5048Z
 CCR Ms. 4045 Time 7322T
 Connealy Final Product

ES Z26
 ES X22

Nice well rounded female here with no gapping holes. I scored her dam's udder very high which is no surprise with Final Product X Stetson, then add Cowboy Cut, the maternal side should be a lock. A maternal brother brought \$7000 in our 2015 bull sale.

A.I. Sire: CLRS Aftershock 604 A on 5-27-16 • Due: 3-6-17 • Safe
 EPDs: 12 1.1 72 112 .25 10 24 60 * 12.65
 Carcass: 38.2 -.24 .49 -.02 .98 149 84
 Pasture Sire: ES CA118 from 6-10 to 7-18-16

LiveAuctions.TV



EIR AY206,
Brother

18 **ES C36**
Red Dbl Polled 1/2 SM 1/2 AR ASA#3025436

BD: 3-16-15 Tattoo: C36 Adj BW: 84 Adj WW: 603

CE	BW	WW	YW	ADG	MCE	Milk	MWW	Stay	DOC	CW	YG	Marb	BF	REA	API	TI
13	.1	71	101	.18	11	18	53	*	10.3	29.4	-.19	.45	-.029	.60	145	78

WS Beef Maker R13
WS Beef King W107
WS Miss Dreamboat T17
HXC Conquest 4405P
EIR Y206
EIR W214

This is the third year in a row we have bred Y206 to Beef King with all three being heifer calves and retained in the herd. Y206's first calf was a Beckton Epic son that brought \$6,500. We really like our Beef King females we have in production.

A.I. Sire: WS Prime Time B6
on 5-6-16 • Due: 2-13-17 • Safe
EPDs: 15 -.7 77 113 .23 13 18 56 * 9.15
Carcass: 35.8 -.25 .33 -.03 .85 149 80
Pasture Sire: ES CA118 from 6-10 to 7-18-16

19 **ES C30**
Black Dbl Polled 1/2 SM 1/2 AN ASA#3025323

BD: 3-14-15 Tattoo: C30 Adj BW: 92 Adj WW: 605

CE	BW	WW	YW	ADG	MCE	Milk	MWW	Stay	DOC	CW	YG	Marb	BF	REA	API	TI
15	1.1	65	115	.31	11	14	47	*	11.2	41.1	-.13	.52	.004	.83	148	76

S A V Iron Mountain 8066
S A V Angus Valley 1867
S A V May 2397
Remington Lock N Load 54U
ES Z53
ESU38

Her dam is one of my favorite cows in the Z model age group. She's easy on the eyes and I scored her udder very high last spring. Don't know a lot about Angus Valley other than he is very impressive to look at and was the high selling bull out of Schaff's in 2012.

A.I. Sire: W/C Lock Down 206Z on 5-29-16 • Due: 3-8-17 • Safe
EPDs: 16 -.7 70 120 .32 8 13 48 * 10.55
Carcass: 40.85 -.10 .50 .00 .67 151 80
Pasture Sire: ES CA118 from 6-10 to 7-18-16



20 **ES C35**
Black Dbl Polled 1/2 SM 1/2 AN ASA#3025377

BD: 3-15-15 Tattoo: C35 Adj BW: 71 Adj WW: 577

CE	BW	WW	YW	ADG	MCE	Milk	MWW	Stay	DOC	CW	YG	Marb	BF	REA	API	TI
13	-1.7	68	113	.28	7	21	55	*	10.7	35.0	-.14	.35	.005	.79	128	75

TNT Tuition U238
W/C United 956Y
Miss Werning 956W
Kesslers Frontman R001
ES Z7
ES X28

Long sided, low birth weight United daughter that has a shot of 004 in her background. Then bred to the new outcross bull J Bar J Nightride. There were several bull sales last spring where the Nightride X United sons topped the sale. The homework is done, help yourself.

A.I. Sire: J Bar J Nightride 225Z on 5-9-16 • Due: 2-16-17 • Safe
EPDs: 18 -2.95 61 101 .25 8 22 53 * 12.2
Carcass: 26.3 -.16 .67 -.01 .67 168 83
Pasture Sire: ES CA118 from 6-10 to 7-18-16





21

ES C59

Black Dbl Polled 1/2 SM 1/2 AN ASA#3025245

LCC New Standard
R B Active Duty 010
B A Lady 6807 305
TNT Knock Out R206
ES X57
ESL71

Really a cowman's kind of female here. Soft made with lots of middle and offers some excellent growth EPDs. Her mating should be just the ticket. Our Lock Down calves come easy but offer a lot more than just a calving ease bull.

BD: 3-22-15 Tattoo: C59 Adj BW: 79 Adj WW: 644

CE	BW	WW	YW	ADG	MCE	Milk	MWW	Stay	DOC	CW	YG	Marb	BF	REA	API	TI
10	1.8	77	128	.32	7	27	66	*	11.7	49.2	-.11	.15	-.059	.36	113	74

A.I. Sire: W/C Lock Down 206Z
on 5-11-16 • Due: 2-18-17 • Safe
EPDs: 14 -.35 76 126 .32 6 19 57 * 10.8
Carcass: 44.9 -.09 .31 -.04 .43 133 79
Pasture Sire: ES CA118 from 6-10 to 7-18-16



22

ES C40

Black Dbl Polled 3/4 SM 1/4 AN ASA#3025308

CCR Cowboy Cut 5048Z
CCR Ms. 4045 Time 7322T
TJ High Bet 26X
ES Z9

Triple C Singletary S3H
WV & YW EPDs in the top 1% and 3% of the breed. Dam is a High Bet daughter who has a WW ratio of 105 on her 1st two calves. A maternal sister was a high seller in last year's Dakota Made sale bringing \$9,000.

ES X106



ES B16, Maternal Sister

BD: 3-17-15 Tattoo: C40 Adj BW: 95 Adj WW: 637

CE	BW	WW	YW	ADG	MCE	Milk	MWW	Stay	DOC	CW	YG	Marb	BF	REA	API	TI
8	4.0	85	127	.26	7	21	64	*	12.8	51.08	-.11	.58	-.015	.72	134	87

A.I. Sire: CLRS Aftershock 604 A on 5-9-16 • Due: 2-16-17 • Safe
EPDs: 10 2.25 77 118 .26 9 24 63 * 12.85
Carcass: 43.55 -.21 .48 -.02 .90 144 85
Pasture Sire: ES CA118 from 6-10 to 7-18-16

23

ES C41

Black Dbl Polled Purebred ASA#3025328

Triple C Singletary S3H
CCR Cowboy Cut 5048Z
CCR Ms. 4045 Time 7322T
Ellingson Legacy M229
ES X7
ESU80

The Cowboy Cut cattle have definitely made a name for themselves, being common sense cattle with no holes. Bred to our high selling bull in 2014 makes this a pretty neat package. If disposition is a factor in your herd then this female we don't recommend.

BD: 3-17-15 Tattoo: C41 Adj BW: 82 Adj WW: 584

CE	BW	WW	YW	ADG	MCE	Milk	MWW	Stay	DOC	CW	YG	Marb	BF	REA	API	TI
12	.9	73	107	.21	8	16	52	*	12.9	34.2	-.29	.36	-.038	.89	143	80

A.I. Sire: ES Load Limit AW9 on 5-10-16 • Due: 2-17-17 • Safe
EPDs: 13 -.3 67 104 .24 8 16 50 * 12.55
Carcass: 31.65 -.34 .36 -.05 .92 145 79
Pasture Sire: ES CA118 from 6-10 to 7-18-16



ES B49,
Maternal Sister

24 **ES C50**
Black Dbl Polled Purebred ASA#3025426

HL Grid Buster P51
HL Game Plan R42X
JDJ Queens Ransom
Ellingson Legacy M229
ES Y21
ESU16

The HL Game Plan cattle have been very practical, not extreme, just right down the middle. Now when you talk cow families, her grandam is a bull raising machine. Raising three sons that have averaged over \$9000 the last 3 years. And a maternal sister sold to Bob Grass in last year's Dakota Made Sale.

BD: 3-19-15 Tattoo: C50 Adj BW: 84 Adj WW: 586

CE	BW	WW	YW	ADG	MCE	Milk	MWW	Stay	DOC	CW	YG	Marb	BF	REA	API	TI
11	1.0	59	97	.23	7	21	51	*	11.4	29.3	-.33	.01	-.049	.90	115	65

A.I. Sire: CCR Spartan 9124A
on 5-10-16 • Due: 2-17-17 • Safe
EPDs: 10 .65 67 106 .24 9 25 59 * 14.75
Carcass: 33.75 -.18 .43 -.01 .78 130 76
Pasture Sire: ES CA118 from 6-10 to 7-18-16

25 **ES C44**
Black Dbl Polled Purebred ASA#3025287

BD: 3-18-15 Tattoo: C44 Adj BW: 79 Adj WW: 549

CE	BW	WW	YW	ADG	MCE	Milk	MWW	Stay	DOC	CW	YG	Marb	BF	REA	API	TI
9	1.7	56	86	.19	12	22	50	*	11.8	23.7	-.26	.26	-.024	.79	127	67

Triple C Singletary S3H
CCR Drover 9094A
CCR Ms. 4045 Time 7322T
ESTL30
ES W50
ESP8

This is one fancy looking female. Whether it's bulls or heifers, this gals mother can stamp 'em. She has raised \$6,000 bulls and \$4,000 heifers. Sired by CCR Drover, a full brother to CCR Cowboy Cut



ES ZW50, Brother

A.I. Sire: W/C Lock Down 206Z on 5-4-16 • Due: 2-11-17 • Safe
EPDs: 13 -.4 65 105 .26 8 17 49 * 10.85
Carcass: 32.15 -.16 .37 -.02 .65 136 74
Pasture Sire: ES CA118 from 6-10 to 7-18-16



ES B32, Maternal Sister



26 **ES C58**
Black Dbl Polled Purebred ASA#3025275

BD: 3-21-15 Tattoo: C58 Adj BW: 91 Adj WW: 676

CE	BW	WW	YW	ADG	MCE	Milk	MWW	Stay	DOC	CW	YG	Marb	BF	REA	API	TI
7	3.8	71	117	.29	5	30	65	*	12.6	45.8	-.28	-.12	-.038	1.02	91	65

HL Grid Buster P51
HL Game Plan R42X
JDJ Queens Ransom
KS Black Diamond W992
ES Z107
EST51

We chose to breed this purebred heifer to Final Answer to make a SimAngus™, but next year the choice is yours. Dam has a WW ratio of 111 on her 1st two calves. Her grandam is our powerful donor, T51, who has given us as many sale toppers but better yet, some nice replacement daughters.

A.I. Sire: S A V Final Answer 0035 on 5-22-16 • Due: 3-1-17 • Safe
EPDs: 14 -.35 72 117 .29 9 26 61 * 12.8
Carcass: 39.5 -.05 .31 .04 .83 129 75
Pasture Sire: ES CA118 from 6-10 to 7-18-16





ES CT78-3,
Brother

27

ES C65

Black Blaze Dbl Polled 3/4 SM 1/4 AN ASA#3025414

TNT Tuition U238
W/C United 956Y
Miss Werning 956W
Cott-GFI Fullback 0038N
EST78
ESP79

Not too many opportunities to buy a blaze faced United heifer, more or less a good one. This is a natural calf that had a WW ratio of 110 out of T78 who has found her way to the donor pen several times, yet still raised 5 natural calves over the years with a WW ratio of 113. Bred to Night Ride, several sale toppers were United X Night Ride around the country last year.

BD: 3-28-15 Tattoo: C65 Adj BW: 92 Adj WW: 665

CE	BW	WW	YW	ADG	MCE	Milk	MWW	Stay	DOC	CW	YG	Marb	BF	REA	API	TI
7	3.9	89	140	.32	2	18	63	*	10.4	58.3	-.08	.28	-.004	.81	110	82

A.I. Sire: J Bar J Nightride 225Z
on 5-10-16 • Due: 2-17-17 • Safe
EPDs: 15 -.15 72 115 .27 5 21 57 * 12.05
Carcass: 37.95 -.13 .63 -.01 .68 152 84
Pasture Sire: ES CA118 from 6-10 to 7-18-16



28

ES C63

Black Dbl Polled 3/4 SM 1/4 AN ASA#3025244

BD: 3-26-15 Tattoo: C63 Adj BW: 77 Adj WW: 584

CE	BW	WW	YW	ADG	MCE	Milk	MWW	Stay	DOC	CW	YG	Marb	BF	REA	API	TI
10	1.3	55	84	.18	7	24	51	*	12.5	22.1	-.27	.26	-.009	.93	120	65

Triple C Singletary S3H
CCR Drover 9094A
CCR Ms. 4045 Time 7322T
O C C Missing Link 830M
ES X2

Let's face it, Val could have done better on the picture here, haha! If she ends up like her mother, you'll be glad you own her. I would take a whole herd of ES X2's deep, thick yet nice fronted calves and has a WW ratio of 104 on four calves.

ESU55

A.I. Sire: Hook's Yellowstone 97Y on 5-2-16 • Due: 2-9-17 • Safe
EPDs: 13 .4 63 93 .19 9 25 56 * 12.05
Carcass: 25.95 -.32 .32 -.03 .96 141 75
Pasture Sire: ES CA118 from 6-10 to 7-18-16



ES X2, Brother



29

ES C64

Red Polled 3/4 SM 1/4 AR ASA#3025311

BD: 3-26-15 Tattoo: C64 Adj BW: 95 Adj WW: 579

CE	BW	WW	YW	ADG	MCE	Milk	MWW	Stay	DOC	CW	YG	Marb	BF	REA	API	TI
6	1.7	61	86	.15	6	14	45	*	9.9	23.3	-.32	.21	-.050	.77	108	66

HSF Better Than Ever
GLS New Direction X184
GLS N6
WS Beef King W107
ES A226
EIR T202

Just buy this heifer! If she ends up being half as good as her dam and grandam, she's a homerun. She is the natural calf out of A226 who went right to the donor pen as a 1st calf heifer. Her grandam, T202, has been a cornerstone of our Sim/Red Angus program where 16 bulls have averaged almost \$7,500 with a high of only \$11,500. Whatever we bred her to, it flat worked.

A.I. Sire: WS Prime Time B6 on 5-10-16 • Due: 2-17-17 • Safe
EPDs: 7 3.0 80 129 .31 6 14 54 * 9.4
Carcass: 51.2 -.06 .39 .001 .72 115 77
Pasture Sire: ES CA118 from 6-10 to 7-18-16



30 **ES C76**
Black Dbl Polled 1/2 SM 1/2 AN ASA#3025256

BD: 4-11-15 Tattoo: C76 Adj BW: 96 Adj WW: 624

CE	BW	WW	YW	ADG	MCE	Milk	MWW	Stay	DOC	CW	YG	Marb	BF	REA	API	TI
7	3.0	80	129	.31	6	14	54	*	9.4	51.2	-.06	.39	.001	.72	115	77

TNT Tuition U238
 W/C United 956Y
 Miss Werning 956W
 KCC Saginaw 6W
 ES Y38
 ESR82

Big powerful United female here. She definitely has the look of a cow that could raise a sale topping bull and mated to Lock Down, it could be her 1st calf.

A.I. Sire: W/C Lock Down 206Z
 on 5-2-16 • Due: 2-9-17 • Safe
 EPDs: 12 .25 77 127 .32 6 13 51 * 9.65
 Carcass: 45.9 -.06 .43 -.01 .61 134 81
 Pasture Sire: ES CA118 from 6-10 to 7-18-16

31 **ES C67**
Red Dbl Polled 1/2 SM 1/4 AN 1/4 AR ASA#3025386

BD: 3-31-15 Tattoo: C67 Adj BW: 68 Adj WW: 574

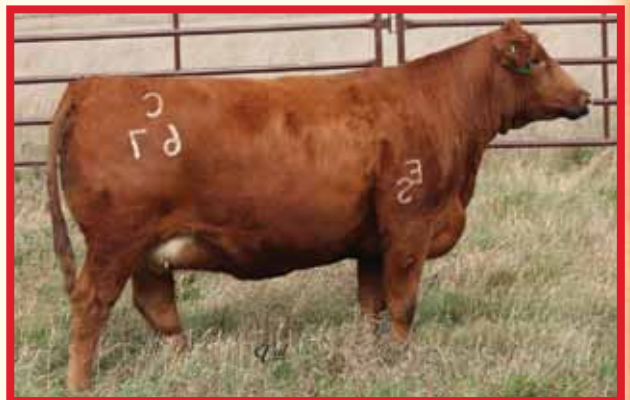
CE	BW	WW	YW	ADG	MCE	Milk	MWW	Stay	DOC	CW	YG	Marb	BF	REA	API	TI
12	-1.1	63	95	.20	7	15	46	*	7.4	24.7	-.19	.41	-.024	.57	132	73

Remington Lock N Load 54U
 W/C Last Call 206A
 G C F Miss New Level R206
 WS Beef King W107
 ES Y60
 EIR U219

This heifer is a tank, much like her maternal sister that sold to Gary Woodring for \$8,250 last year. If you like consistency this may be it, you should see the calf Y60 raised this year, she was a class winner at the SD State Fair.



ES B46, Maternal Sibling



A.I. Sire: WS Prime Time B6 on 5-11-16 • Due: 2-18-17
 • Safe
 EPDs: 14 -1.3 73 110 .24 11 16 53 * 7.7
 Carcass: 33.45 -.25 .31 -.03 .84 142 78
 Pasture Sire: ES CA118 from 6-10 to 7-18-16

32 **ES C81**
Black Dbl Polled 3/4 SM 1/4 AN ASA#3025326

BD: 4-18-15 Tattoo: C81 Adj BW: 100 Adj WW: 616

CE	BW	WW	YW	ADG	MCE	Milk	MWW	Stay	DOC	CW	YG	Marb	BF	REA	API	TI
7	4.7	69	107	.24	5	19	54	*	10.8	40.5	-.25	.38	-.038	.85	113	72

Triple C Singletary S3H
 CCR Drover 9094A
 CCR Ms. 4045 Time 7322T
 O C C Paxton 730P
 ES W81
 ESR52

I'm sure this nice profiling heifer will have some friends sale day. Sired by Drover, a full brother to Cowboy Cut. Bred to Dew It Right for a purebred calf.



A.I. Sire: Welshs Dew It Right 067T on 5-10-16 • Due: 2-17-17 • Safe
 EPDs: 11 2.55 66 92 .17 8 16 49 * 12.65
 Carcass: 28.1 -.33 .27 -.05 .87 130 72
 Pasture Sire: ES CA118 from 6-10 to 7-18-16



ES ZW15,
Brother

33

ES C84 ASA#3025370

Black Baldy Dbl Polled 1/2 SM 3/8 AN 1/8 AR

BD: 4-22-15 Tattoo: C84 Adj BW: 89 Adj WW: 683

CE	BW	WW	YW	ADG	MCE	Milk	MWW	Stay	DOC	CW	YG	Marb	BF	REA	API	TI
6	4.0	84	133	.31	0	17	59	*	8.4	54.8	-.12	.39	-.021	.78	104	79

W/C United 956Y
ES AU56-1
ESU56
Hooks Titus 31T
ES W15
EST224

This baldy female has a lot to offer for the performance minded cattleman, with the U56 cow on the top side and W15, the mother of ES Surelock owned by Windy Creek, on the bottom. It's easy to see why the WW & YW EPDs are in the top 1% and 2% of the breed.

A.I. Sire: J Bar J Nightride 225Z
on 5-1-16 • Due: 2-8-17 • Safe
EPDs: 15 -1 69 111 .27 4 20 54 * 11.05
Carcass: 36.2 -.15 .69 -.02 .66 152 84
Pasture Sire: ES CA118 from 6-10 to 7-18-16



34

ES C82

Black Dbl Polled 1/2 SM 1/2 AR ASA#3025472

BD: 4-20-15 Tattoo: C82 Adj BW: 84 Adj WW: 607

CE	BW	WW	YW	ADG	MCE	Milk	MWW	Stay	DOC	CW	YG	Marb	BF	REA	API	TI
10	.4	67	100	.2	5	24	57	*	10.9	29.6	-.24	.33	-.034	.72	120	73

Hooks Shear Force 38K
ES ZX75
ES X75
MLK CRK Cub 722
EIR X204
EIR U201

Seems like this Sim/Red Angus cross just keeps building up steam. The commercial interest in this cross has been phenomenal. It's because it works. It's not uncommon for a good set of red bred heifers to top the sale at our local sale barn



ES BX204, Maternal Brother

A.I. Sire: W/C Lock Down 206Z on 5-9-16 • Due: 2-16-17
• Safe
EPDs: 14 -1.05 71 112 .26 5 18 53 * 10.4
Carcass: 35.1 -.15 .40 -.02 .61 137 79
Pasture Sire: ES CA118 from 6-10 to 7-18-16



35

ES C92

Red Dbl Polled 1/2 SM 1/2 AR ASA#3025469

BD: 5-5-15 Tattoo: C92 Adj BW: 79 Adj WW: 625

CE	BW	WW	YW	ADG	MCE	Milk	MWW	Stay	DOC	CW	YG	Marb	BF	REA	API	TI
12	1.1	71	104	.21	5	19	55	*	10.4	33.3	-.28	.40	-.034	.90	128	76

Hooks Shear Force 38K
ES ZX75
ES X75
5L Norseman King 2291
EIR Y224
EIR U201

A little younger May born heifer that has a really neat look. Bred to Lock Down, who we have used on heifers for two years now and have been very happy with the results.

A.I. Sire: W/C Lock Down 206Z on 6-7-16 • Due: 3-17-17
EPDs: 15 -.7 72 114 .27 5 16 52 * 10.15
Carcass: 36.95 -.17 .44 -.02 .70 141 80
Pasture Sire: ES CA118 from 6-10 to 7-18-16

Red Angus Beauties



ES AU204, Brother



ES ZU204, Brother

36 **EIR C205**
Purebred Red Angus REG#3482076

Messmer Joshua 019P
Messmer Packer S008
Messmer Millie 124P
Bieber Make Mimi 7249
EIR U204
EIR S220

If she ends up like her mother, you will want to own this heifer. She is deep bodied with that brood cow look like her mother who has weaned off 7 calves with low BW and above average growth and still has an excellent udder. We love our Make Mimi cows. Note her growth EPDs, top 3% of the breed.

BD: 3-14-15 Tattoo: C205 Adj BW: 92 Adj WW: 611

CED	BW	WW	YW	Milk	ME	HPG	CEM	Stay	Marb	YG	CW	REA	Fat
1	1.9	78	120	15	7	9	-2	13	.57	-.02	44	.50	.00

A.I. Sire: Brown JYJ Redemption Y1334 on 5-2-16 • Due: 2-9-17 • Safe
EPDs: 8 -1.5 72 119 15 3 9 2 16
Carcass: .66 -.03 39 .25 -.00
Pasture Sire: ES CA118 from 6-10 to 7-18-16

37 **EIR C206**
Purebred Red Angus REG#3482049

BUF CRK The Right Kind U199
PIE The Cowboy Kind 343
PIE Cascade 561
Glacier Chateau 744
EIR U201
EIR S200

I like the pedigree here, sired by the \$70,000 bull, Cowboy Kind, that came out of the Pieper program then back to Glacier Chateau and Make Mimi, then bred to the takeover son, Sensational.



A.I. Sire: Brown AA Sensational B5147 on 5-4-16 • Due: 2-11-17 • Safe
EPDs: 10 -3.6 60 93 23 5 15 5 14
Carcass: .64 -.08 20 .43 .01
Pasture Sire: ES CA118 from 6-10 to 7-18-16

NEW FOR 2016... View & Place Bids Online at: **LiveAuctions.TV**



EIR B203, Maternal Sibling

38 EIR C208

Purebred Red Angus REG#3482056

BD: 3-18-15 Tattoo: C208 Adj BW: 65 Adj WW: 625

CED	BW	WW	YW	Milk	ME	HPG	CEM	Stay	Marb	YG	CW	REA	Fat
8	-2.7	74	117	18	8	10	3	11	.45	-.02	35	.46	.01

Messmer Joshua 019P
 Messmer Packer S008
 Messmer Millie 124P
 HXC Conquest 4405P
 EIR Z203
 EIR X213

A long time tested cow family behind this heifer. Her great grandam is going strong and has a WW ratio of 102 on eight calves, that's what we like, good cow families. Nice growth EPDs, top 6% and 5% of the breed for WW and YW.

A.I. Sire: Brown JYJ Redemption Y1334 on 5-7-16 • Due: 2-14-17
 • Safe
 EPDs: 12 -3.8 70 118 17 3 10 4 14
 Carcass: .60 -.03 35 .23 .00
 Pasture Sire: ES CA118 from 6-10 to 7-18-16

39 EIR C210

Purebred Red Angus REG#3482058

BD: 4-3-15 Tattoo: C210 Adj BW: 80 Adj WW: 597

CED	BW	WW	YW	Milk	ME	HPG	CEM	Stay	Marb	YG	CW	REA	Fat
-4	.7	68	106	19	-5	14	4	14	.47	.04	34	.31	.02

Beckton Epic K F075
 Beckton Epic R397 K
 Beckton Kit F468 JL
 Badlands Net Worth 23U
 EIR Y219
 EIR K221

This girls grandam is our K221 cow. She was one of our first Red Angus cows that really made an impact on which direction our Red Angus herd was going to go, sound with a lot of body and an excellent udder. Bred to the new heifer bull we used last spring, Sensational.

A.I. Sire: Brown AA Sensational B5147 on 5-10-16 • Due: 2-17-17
 • Safe
 EPDs: 6 -2.5 66 99 22 0 15 4 15
 Carcass: .68 -.03 25 .49 .03
 Pasture Sire: ES CA118 from 6-10 to 7-18-16

40 EIR C211

Purebred Red Angus REG#3482063

BD: 4-4-15 Tattoo: C211 Adj BW: 84 Adj WW: 581

CED	BW	WW	YW	Milk	ME	HPG	CEM	Stay	Marb	YG	CW	REA	Fat
1	.5	60	94	22	2	12	7	13	.29	-.01	27	.11	-.02

BUF CRK The Right Kind U199
 PIE The Cowboy Kind 343
 PIE Cascade 561
 OHRR Dakota Copper 29K
 EIR Y222
 EIR S210

Out of the \$70,000 bull, Pie the Cowboy Kind. In our bull sale last spring, the Cowboy Kind bulls averaged over \$5,500. She is a nice fronted female with a little extra length of boy.

A.I. Sire: Brown AA Sensational B5147 on 5-10-16 • Due: 2-17-17
 • Safe
 EPDs: 8 -2.7 62 93 23 4 14 6 14
 Carcass: .59 -.06 21 .39 .01
 Pasture Sire: ES CA118 from 6-10 to 7-18-16

NEW FOR 2016...

View & Place Bids Online at:

LiveAuctions.TV





Healy Simmentals

Kevin Healy Family, 29621 441st Ave, Irene, SD 57037
Home 605-263-3876, Cell 605-660-3880



41

KGH Miss Epic 4216B

Black Dbl Polled Purebred ASA#3162106

Mr. NLC Upgrade U8676
JF Epic 1206Y
JF Latisha 5153R
GCF Beyond
KGH Miss Beyond 0230X
KGH Dragon 65S

A powerful heifer here. She is thick, deep bodied, big ribbed and has a lot of look. She's out of Epic, our Upgrade x Latisha herd sire. We breed all our unrelated heifers and the majority of our cow herd to. 4216 looks like a really good half-blood but she's a purebred Simmental heifer. We will be retaining a flush at our expense.

BD: 12-20-14 Tattoo: 4216B Adj BW: 81 Adj WW: 724

CE	BW	WW	YW	ADG	MCE	Milk	MWW	Stay	DOC	CW	YG	Marb	BF	REA	API	TI
6	2.0	67	92	.15	7	24	57	*	10.5	26.8	-.38	.17	-.068	.85	112	70

A.I. Sire: SS/PRS Tail Gater 621Z
on 4-20-16 • Due 1-28-17

EPDs: 8 2.1 69 99 .19 8 19 54 * 10.95
Carcass: 31.45 -.34 .13 -.06 .87 117 71

42

KGH Miss Epic 4202B

Black Polled 1/2 SM 1/4 AN 1/4 CS ASA#3155358

BD: 12-14-14 Tattoo: 4202B Adj BW: 79 Adj WW: 748

CE	BW	WW	YW	ADG	MCE	Milk	MWW	Stay	DOC	CW	YG	Marb	BF	REA	API	TI
9	1.3	77	107	.19	8	25	63	*	*	34.6	-.30	.17	-.070	.68	121	75

Mr. NLC Upgrade U8676
JF Epic 1206Y
JF Latisha 5153R

T99 240

A.I. Sire: SS/PRS Tail Gater 621Z on 4-5-16 • Due 1-13-17
EPDs: 10 1.75 74 107 .21 8 20 57 * *
Carcass: 35.35 -.30 .13 -.06 .78 119 72

If you like them moderate framed and super deep ribbed, this is one to look at. She goes back to a really good commercial cow that keeps giving us really nice 1/2 bloods. We have Epic daughters in production and they are doing a great job for us as cows.



43

KGH Miss Noon 4218B

Black Baldy Dbl Polled 5/8 SM 3/8 AN ASA#3155350

BD: 12-22-14 Tattoo: 4218B Adj BW: 84 Adj WW: 726

CE	BW	WW	YW	ADG	MCE	Milk	MWW	Stay	DOC	CW	YG	Marb	BF	REA	API	TI
9	.7	51	77	.16	8	21	46	*	9.8	16.8	-.28	.27	-.050	.56	114	61

STF Seymour Butts TU51
KGH High Noon 1220Y
KGH Miss Dragon 6174S
WAR Hall Of Fame 8023
KGH Miss Hall 442P
KGH Miss Exclusive 252M

A.I. Sire: JF Epic 1206Y on 4-4-16 • Due 1-12-17
EPDs: 9 1.35 66 95 .19 8 23 56 * 10.8
Carcass: 28.45 -.35 .25 -.06 .85 125 73

This baldy goes back to Hall of Fame on the dam side. The Hall of Fame and Simmental cross really worked. 4218 has a big square hip and should raise bulls or keeper heifers for the new owner.





44

KGH Miss 546C

Black Baldy Dbl Polled 3/4 SM 1/4 AN ASA#3155354

BD: 1-20-15 Tattoo: 546C Adj BW: 84 Adj WW: 740

CE	BW	WW	YW	ADG	MCE	Milk	MWW	Stay	DOC	CW	YG	Marb	BF	REA	API	TI
10	1.8	72	98	.16	9	15	51	*	11.9	30.1	-.31	.22	-.066	.70	124	72

Welshs Dew It Right 067T
GKS Timed Right Z119
SS Magnificent Dreams
STF Seymour Butts TU51
KGH Miss Seymour 05X
KGH Miss Line 6101S

Timed Right is the sire to 546. He was a Champion Purebred Simmental Bull at the Nebraska State Fair as a calf. This heifer has a really nice look to her. She is also bred to Epic for a purebred calf that should be really nice.

A.I. Sire: JF Epic 1206Y
on 4-2-16 • Due 1-10-17
EPDs: 9 1.9 77 106 .19 8 20 58 * 11.85
Carcass: 35.1 -.37 .22 -.07 .92 127 77



45

KGH Ms. High Maintenance 556C

Black Dbl Polled 3/4 SM 1/4 AN ASA#2998180

BD: 1-27-15 Tattoo: 556C Adj BW: 87 Adj WW: 608

CE	BW	WW	YW	ADG	MCE	Milk	MWW	Stay	DOC	CW	YG	Marb	BF	REA	API	TI
8	2.1	64	91	.17	7	21	53	*	9.9	27.2	-.25	.17	-.047	.62	110	66

STF Seymour Butts TU51
KGH High Noon 1220Y
KGH Miss Dragon 6174S
DJ Salution S502
KGH Miss Salute 958W
KGH Miss Dream 724T

This heifer was the Reserve Percentage Heifer Calf at the South Dakota State Fair in 2015. She's out of High Noon, who was our herd sire that was probably one of the thickest bulls we've raised and kept for ourselves. She's bred to Epic for a really good early calf.

A.I. Sire: JF Epic 1206Y on 4-23-16 • Due 1-31-17
EPDs: 8 2.05 72 103 .2 7 23 59 * 10.85
Carcass: 33.65 -.34 .20 -.06 .88 120 74



46

KGH Miss Print 5132C

Black Dbl Polled 3/8 SM 3/8 AN 1/4 CS ASA#3155355

BD: 2-16-15 Tattoo: 5132C Adj BW: 87 Adj WW: 585

CE	BW	WW	YW	ADG	MCE	Milk	MWW	Stay	DOC	CW	YG	Marb	BF	REA	API	TI
5	3.4	61	91	.19	3	19	49	*	6.3	2.5	-.35	.11	-.086	.67	84	59

ES Atokad XS55
JMG Blueprint 685Z
JMG Miss 685S
STF Seymour Butts TU51
KGH Miss Seymour 015X
76

This heifer is our youngest one we brought to the Dakota Made sale that should become a tremendous cow. She is out of a Goeken bull we bought from them, that goes back to Eichacker breeding. She is bred to Stepping Stone. She is a really nice heifer.

A.I. Sire: WS Stepping Stone B44 on 6-5-16 • Due 3-15-17
EPDs: 7 2.15 68 107 .25 4 18 52 * 8.3
Carcass: 36.7 -.30 .20 -.07 .74 101 68

Lehrman Family Simmentals

Dan & Vicki Lehrman 605-530-5903
 Luke Lingemann, Herdsman 605-630-9325



47

LEFS No Remorse 504C

Black Dbl Polled 1/2 SM 1/2 AN ASA#2952720

Yardley High Regard W242
 W/C No Remorse 763Y
 DW Susanna 763T
 JSAR Mr. Maverick 275Y
 NEU Ms. Maxine
 SS Miss Maxine

WOW be sure and look up this beauty sale day. She's clean fronted with great neck extension. This deep bodied female paired with W/C Lock Down should be a great one.

BD: 1-17-15 Tattoo: 504C Adj BW: 88 Adj WW: 664

CE	BW	WW	YW	ADG	MCE	Milk	MWW	Stay	DOC	CW	YG	Marb	BF	REA	API	TI
10	.2	51	75	.15	6	21	46	*	10.9	15.0	-.17	-.04	-.009	.51	96	54

A.I. Sire: W/C Lock Down 206Z
 on 4-26-16 • Due: 2-3-17

EPDs: 13 -1.15 63 100 .24 6 16 48 * 10.4
 Carcass: 27.8 -.12 .22 -.01 .51 125 69

48

LEFS Ms. Amigo 511C

Red Dbl Polled 1/2 SM 1/2 AR ASA#2952726

BD: 2-3-15 Tattoo: 511C Adj BW: 88 Adj WW: 740

CE	BW	WW	YW	ADG	MCE	Milk	MWW	Stay	DOC	CW	YG	Marb	BF	REA	API	TI
12	-.2	59	77	.12	5	7	36	*	9.9	15.1	-.14	.30	-.013	.39	122	65

CNS Dream On L186
 GCF Mr. Amigo
 GCF Miss MT-Zel
 Weber Mr. Vacation 775
 Weber Ms. Vacation 0106
 Weber Ms. Cheyenne 765

Here is one of the most powerful Amigo daughter you will find. She is super deep, sound footed and backed by a strong cow family. Buy with confidence here as she will be a money maker for years to come.

A.I. Sire: W/C Lock N Load 206C on 4-26-16 • Due: 2-3-17
 EPDs: 12 -.75 58 81 .14 6 16 45 * 8.5
 Carcass: 16.5 -.27 .09 -.05 .55 113 62



49

LEFS Ms. All In 516C

Red Dbl Polled Purebred ASA#2952731

BD: 2-7-15 Tattoo: 516C Adj BW: 82 Adj WW: 652

CE	BW	WW	YW	ADG	MCE	Milk	MWW	Stay	DOC	CW	YG	Marb	BF	REA	API	TI
15	-.8	71	102	.19	11	30	66	24	9.4	28.7	-.29	.09	-.060	.68	142	78

HSF High Roller 12T
 WS All In W111
 WS Miss Tracy T50
 R&R Pacesetter W764
 LEFS Ms. Pacesetter 1336A
 WINC Dream Girl 0030X

This red All In heifer was hard to put on the sale. She's a good one. Just take a look at her EPDs and that will tell her story

A.I. Sire: W/C Lock N Load 206C on 4-26-16 • Due: 2-3-17
 EPDs: 14 -1.05 64 93 .18 9 28 60 * 8.25
 Carcass: 23.3 -.35 -.02 -.07 .69 119 66





50

LEFS Ms. Upgrade 508 C

Black Dbl Polled 3/4 SM 1/4 AN ASA#2952723

BD: 2-1-15 Tattoo: 508C Adj BW: 90 Adj WW: 806

CE	BW	WW	YW	ADG	MCE	Milk	MWW	Stay	DOC	CW	YG	Marb	BF	REA	API	TI
10	1.8	77	115	.24	8	22	60	*	12.6	40.3	-.57	.37	-.115	1.24	133	82

Ellingson Legacy M229
Mr. NLC Upgrade U8676
Ms. NLC Mojo S6119 B
Hart Final Answer
LEFS Miss Hart F 1344A
JBS Miss Olie 630Y

Upgrade heifer that is big boned and solid made. She's clean fronted and with a 114 YW and 1.24 REA she should produce some good ones.

A.I. Sire: CCR Anchor 9071B
on 4-25-16 • Due: 2-2-17
EPDs: 11 .3 72 106 .21 8 22 58 * 14.9
Carcass: 32.85 -.39 .54 -.06 1.05 147 84



51

LEFS Ms. Brillnce 517C

Black Dbl Polled 1/2 SM 1/2 AN ASA#2952732

BD: 2-7-15 Tattoo: 517C Adj BW: 72 Adj WW: 666

CE	BW	WW	YW	ADG	MCE	Milk	MWW	Stay	DOC	CW	YG	Marb	BF	REA	API	TI
13	-.6	57	94	.23	7	26	54	*	12.6	25.7	-.18	.16	-.001	.76	122	65

S A V Bismarck 5628
S A V Brilliance 8077
S A V Blackcap May 5270
Flying B Cut Above
Brant Mandy Z383R
Brant T2066

I really like these percentage Brilliance heifers. They are moderately made and easy on the eyes.

A.I. Sire: W/C Lock Down 206Z on 4-26-16 • Due: 2-3-17
EPDs: 15 -1.55 66 109 .28 6 19 51 * 11.25
Carcass: 33.15 -.12 .32 -.01 .63 138 75



52

LEFS Ms. Dom 525C

Red Baldy Dbl Polled 3/4 SM 1/4 AR ASA#2952740

BD: 2-10-15 Tattoo: 525C Adj BW: 94 Adj WW: 685

CE	BW	WW	YW	ADG	MCE	Milk	MWW	Stay	DOC	CW	YG	Marb	BF	REA	API	TI
4	4.8	70	110	.25	.5	19	54	*	9.3	42.6	-.05	.31	.006	.62	93	69

Harkers/JS Domination
Jass Domination 57Y
JS Sweet Memories 7P
BFCK Cherokee Cyn 4912
Brant Black Cherry U71K
Kappes Arnold S4012 K71

Here is a Domination daughter that is one thick made red baldy. Her mother never misses either, she has one in the bull pen or heifer pen every year.

A.I. Sire: WS Prime Beef B22P on 4-26-16 • Due: 2-3-17
EPDs: 6 3.3 62 95 .21 6 20 51 * 9.1
Carcass: 31.65 -.18 .21 -.03 .63 106 66



53 **LEFS Ms. Lokdown 518C**
 Black Baldy Dbl Polled 3/4 SM 1/4 AN ASA#2952733

Remington Lock N Load 54U
 W/C Lock Down 206Z
 G C F Miss New Level R206
 RC Club King 040R
 MK Yankee Y122
 MK Winnie W914

This W/C Lock Down heifer has style, is nice fronted and a nice set of balance EPDs. Mated to CCR Anchor, it should be a good one.

BD: 2-7-15 Tattoo: 518C Adj BW: 75 Adj WW: 628

CE	BW	WW	YW	ADG	MCE	Milk	MWW	Stay	DOC	CW	YG	Marb	BF	REA	API	TI
14	-1.0	64	93	.19	7	13	45	*	10.6	23.9	-.21	.30	-.057	.38	140	73

A.I. Sire: CCR Anchor 9071B
 on 4-26-16 • Due: 2-3-17
 EPDs: 14 -1.1 66 95 .19 7 17 50 * 13.9
 Carcass: 24.65 -.21 .50 -.03 .62 150 80

54 **LEFS Ms. Red Zone 530C**
 Red Dbl Polled Purebred ASA#2952745

HILB Red Zone A32
 AJE Ms. Chanel Y32
 CCR Red Line 5338U
 LEFS Miss Redline 1330A
 Brant Black Cherry U71K

Another great baldy heifer sired by Red Zone. We are real happy with our Red Zone mothers.

BD: 2-14-15 Tattoo: 530C Adj BW: 91 Adj WW: 668

CE	BW	WW	YW	ADG	MCE	Milk	MWW	Stay	DOC	CW	YG	Marb	BF	REA	API	TI
8	2.5	66	96	.19	3	16	49	*	11.8	30.4	-.42	.58	-.112	.68	130	79

A.I. Sire: Leachman Cadillac L025A on 4-26-16 • Due: 2-3-17
 EPDs: 12 .15 69 101 .20 5 17 52 * 9.95
 Carcass: 30.10 -.30 .56 -.06 .70 138 80



55 **LEFS Ms. Hi Stakes 550C**
 Red Dbl Polled 1/2 SM 7/16 CS 1/16 AN ASA#2952764

WS High Stakes W115
 WS Miss Dolly T10
 Miss LEFS 1244Z
 RS Xabrina X18

Nice, moderate made High Stakes heifer. This heifer's mother is a milking machine with calving ease to boot.

BD: 2-25-15 Tattoo: 550C Adj BW: 80 Adj WW: 688

CE	BW	WW	YW	ADG	MCE	Milk	MWW	Stay	DOC	CW	YG	Marb	BF	REA	API	TI
14	-1.8	59	89	.19	10	34	63	*	*	20.3	-.11	.04	-.002	.44	135	69

A.I. Sire: W/C Lock N Load 206C on 4-26-16 • Due: 2-3-17
 EPDs: 13 -1.55 58 86 .18 8 29 59 * *
 Carcass: 19.1 -.26 -.04 -.04 .57 115 62





56

LEFS Ms. Red Zone 566C

Red Dbl Polled Purebred ASA#2961375

BD: 3-10-15 Tattoo: 566C Adj BW: 86 Adj WW: 718

CE	BW	WW	YW	ADG	MCE	Milk	MWW	Stay	DOC	CW	YG	Marb	BF	REA	API	TI
9	1.1	62	89	.17	11	23	53	20	7.2	24.6	-.28	-.11	-.037	.76	108	63

GLS New Direction X184
HILB Red Zone A32
AJE Ms. Chanel Y32
Kappes Stop Light W180
Kappes Niki W344 Z122
Kappes Niki P50 W344

Here is a nice red heifer out of our New Direction son HILB Red Zone. She's long, nice fronted, deep ribbed and should work good with Prime Beef.

A.I. Sire: *WS Prime Beef B22P*
on 4-25-16 • Due: 2-2-17
EPDs: 9 1.45 58 85 .17 11 21 50 20 8.05
Carcass: 22.65 -.30 .00 -.05 .70 112 63



57

LEFS Ms. Renegade 558C

Black Dbl Polled 3/4 SM 1/4 AN ASA#2961351

BD: 3-1-15 Tattoo: 558C Adj BW: 96 Adj WW: 656

CE	BW	WW	YW	ADG	MCE	Milk	MWW	Stay	DOC	CW	YG	Marb	BF	REA	API	TI
3	5.6	74	114	.25	7	14	52	*	9.4	46.1	-.23	.20	-.037	.87	100	70

SVF Steel Force S701
HSF/RF Renegade Y132
RF Neva
RC Club King 040R
WINC Club King 104Y
Miss Werning 637S

This Renegade daughter has plenty of gas in her tank with a 114 YR EPD. If performance is the name of the game at your place, 558C will fit right in. She is already doing her part by packing twins.

A.I. Sire: *CCR Anchor 9071B* on 4-26-16 • Due: 2-3-17 • Twins
EPDs: 8 2.2 71 106 .22 7 18 54 * 13.3
Carcass: 35.75 -.22 .45 -.02 .87 132 79



58

LEFS Ms. Domination 582C

Red Dbl Polled Purebred ASA#2961361

BD: 3-18-15 Tattoo: 582C Adj BW: 92 Adj WW: N/A

CE	BW	WW	YW	ADG	MCE	Milk	MWW	Stay	DOC	CW	YG	Marb	BF	REA	API	TI
5	4.3	70	110	.25	8	25	60	15	8.2	41.9	-.25	.05	-.065	.68	101	68

Harkers/JS Domination
Jass Domination 57Y
JS Sweet Memories 7P
Wheatland Red Hummer 608S
Brant/Jazzy Lady Y240R
Ankony Miss Candace R91

These domination heifers are thick made big ribbed. These Domination heifers will make great cows that will produce calves that just flat out grow.

A.I. Sire: *Leachman Cadillac L025A* on 4-25-16 • Due: 2-2-17
EPDs: 10 1.05 72 108 .23 8 22 58 * 8.15
Carcass: 35.85 -.22 .29 -.04 .70 122 74



59

LEFS Ms. Brilliance 552C
Black Dbl Polled 1/2 SM 1/2 AN ASA#2952766

- S A V Bismarck 5628
- S A V Brilliance 8077
- S A V Blackcap May 5270
- Oval F Ringleader R579
- Double R Miss X26
- Double R Miss T36

Another percentage Brilliance heifer with great CE and growth numbers. Paired with Lock Down should be a great one.

BD: 2-26-15 Tattoo: 552C Adj BW: 77 Adj WW: 603

CE	BW	WW	YW	ADG	MCE	Milk	MWW	Stay	DOC	CW	YG	Marb	BF	REA	API	TI
15	-1.4	55	87	.20	9	19	47	*	10.8	19.7	-.13	.53	.020	.68	150	73

A.I. Sire: W/C Lock Down 206Z
on 4-26-16 • Due: 2-3-17
EPDs: 16 -1.95 65 106 .26 7 15 48 * 10.35
Carcass: 30.15 -.10 .50 .00 .59 152 79



Congratulations Adam Eichacker!

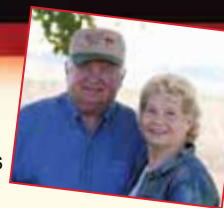


National Proficiency in Diversified Crop Production Entrepreneurship Winner



Andersland Family Simmentals

Bruce & Beth Andersland, Emmons, MN
Phone 507-402-1095



Dear Fellow Cattle Enthusiasts, It is with mixed feelings that we bring you this offering of females. Due to the loss of one of our pastures for next year and our desire to start cutting back on our workload, we reluctantly made the difficult decision to reduce our herd. We started breeding Simmental cattle in 1991 and feel that we have grown and changed with the Simmental breed. Every female in the herd has been retained for a reason - whether it be outstanding genetics, top performance, superior phenotype or a combination of all three. Ease of handling the cattle has been a top priority, and every animal that is either to be retained in our herd or sold for breeding purposes is "named, tamed, and halter-broke" - and this group is no exception to that rule. We hope that you will find them as productive and appealing as we have. Many thanks to Steve & Cathy Eichacker for including us in this sale and to Eberspacher Enterprises for all the arrangements to make it happen. If anyone has any questions, feel free to give Beth a call.



Val

60 **ASF Delight D14** Black Baldy Polled/Scurred Purebred ASA#3140121

BD: 2-24-16 Tattoo: D14 Adj BW: 96 Adj WW: 747

CE	BW	WW	YW	ADG	MCE	Milk	MWW	Stay	DOC	CW	YG	Marb	BF	REA	API	TI
1	3.9	62	94	.20	8	26	57	*	8.3	31.6	-.23	.04	-.057	.53	87	61

This stylish black baldy isn't just fun to look at, Delight brings performance as well. Many of her brothers regularly topped our rate of gain in the carcass lot. Its very hard to find this combination of growth and style. You will be Delighted to have her in your herd!

FLE Bride Bull
ASF/TRE Yukon
ASF Unforgettable
ASF Ponderosa
ASF Twilight
ASF Moonglow



61 **ASF Dawn D7** Red Dbl Polled Purebred ASA#3140130

BD: 2-14-16 Tattoo: D7 Adj BW: 103 Adj WW: 732

CE	BW	WW	YW	ADG	MCE	Milk	MWW	Stay	DOC	CW	YG	Marb	BF	REA	API	TI
3	6.4	60	79	.12	7	16	46	22	9.2	26.2	-.32	.00	-.100	.41	99	56

STF Dominance T171
HSF Dynamite Y144
Miss CCF Fantasy U18
SVF/NJC Built Right N48
ASF Xylia
ASF Reflection

Talk about a freight train! I am not sure you could make one longer than this and still hold a strong top with good depth. Last year's sibling topped the rate of gain for our herd so performance is the name of the game with this red female!



ASF Blue Moon,
Dam
Sells as Lot 75

62 **ASF Dreamy D4**
Black Polled Purebred ASA#3140148

BD: 2-10-16 Tattoo: D4 Adj BW: 81 Adj WW: 608

CE	BW	WW	YW	ADG	MCE	Milk	MWW	Stay	DOC	CW	YG	Marb	BF	REA	API	TI
6	1.9	55	78	.14	5	18	46	21	9.8	19.3	-.36	-.02	-.073	.66	107	59

HSF Better Than Ever
GLS New Direction X184
GLS N6
HSF Dynamite Y144
ASF Blue Moon
ASF Twilight

The New Direction calves continue to impress breeders around the country. Dreamy embodies the femininity that we all look for in our Simmental females, yet she still carries solid depth. A good combination heifer.

63 **ASF Delilah D10**
Black Dbl Polled Purebred ASA#3140141

BD: 2-19-16 Tattoo: D10 Adj BW: 82 Adj WW: 667

CE	BW	WW	YW	ADG	MCE	Milk	MWW	Stay	DOC	CW	YG	Marb	BF	REA	API	TI
7	1.6	78	104	.16	9	20	59	22	13.7	33.0	-.20	.38	-.019	.75	140	82

Triple C Singletary S3H
CCR Cowboy Cut 5048Z
CCR Ms. 4045 Time 7322T
SAS T101 Sweet Meat
ASF Zu La La
ASF U Lala

We really like what we have seen out of our Cowboy Cut calves and feel that his popularity will continue to grow. Delilah is an attractive female with a great disposition, and also great EPD's for WW and YW.



ASF Zu La La, Dam
Sells as Lot 79



64 **ASF Dinah D11**
Black Dbl Polled Purebred ASA#3140116

BD: 2-20-16 Tattoo: D11 Adj BW: 122 Adj WW: 880

CE	BW	WW	YW	ADG	MCE	Milk	MWW	Stay	DOC	CW	YG	Marb	BF	REA	API	TI
5	3.7	87	146	.37	4	26	69	25	12.4	62.3	-.31	.00	-.067	1.10	128	79

Mr. NLC Upgrade U8676
GLS Integrate Z3
GLS Miss BTE W149
PVF-BF BF26 Black Joker
ASF Regina
ASF Martina

If you want pounds fast, Dinah is for you! Sired by GLS Integrate out of a Joker cow, she topped her contemporaries with an ADJ WW of 880. WW & YW EPD's are off the charts - even better than the top 1%.





65

ASF Daisy D19

Red Dbl Polled Purebred ASA#3140150

BD: 3-1-16 Tattoo: D19 Adj BW: 82 Adj WW: 661

CE	BW	WW	YW	ADG	MCE	Milk	MWW	Stay	DOC	CW	YG	Marb	BF	REA	API	TI
10	1.8	67	95	.17	8	23	57	25	13.6	28.6	-.36	.20	-.056	.92	138	73

A very good, solid structured red heifer out of two black parents. Daisy is sired by Long's Damien and has a great combination of EPDs straight across from calving ease all the way to milk. Not to mention she is tame as a kitten. Quite simply, she puts it all together in one package.

Hooks Shear Force 38K
Long's Damien
Elm-Mound Lucky Man Y157
HS Work Force X427
ASF Blossom
ASF Zarina



ASF Blossom B6, Dam
Sells as Lot 76



66

ASF Divinity D29

Black Polled/Scurred Purebred ASA#3140146

BD: 3-18-16 Tattoo: D29 Adj BW: 73 Adj WW: 558

CE	BW	WW	YW	ADG	MCE	Milk	MWW	Stay	DOC	CW	YG	Marb	BF	REA	API	TI
7	-1.1	35	60	.15	9	27	44	*	9.7	4.9	-.33	.10	-.053	.55	108	55

FLE Bride Bull
ASF/TRE Yukon
ASF Unforgettable
ASF/TRE Yukon
ASF Angel
ASF Yo Yo

We are very excited about the combination of femininity and structure that this heifer possesses. Pretty as a picture, Divinity's phenotype points to longevity and her numbers back that up.



ASF Angel A42, Dam
Sells as Lot 77



67

ASF Diamond Girl D31

Black Dbl Polled Purebred ASA#3140129

BD: 3-22-16 Tattoo: D31 Adj BW: 85 Adj WW: 683

CE	BW	WW	YW	ADG	MCE	Milk	MWW	Stay	DOC	CW	YG	Marb	BF	REA	API	TI
6	3.4	56	72	.10	4	15	43	21	10.1	17.2	-.40	.00	-.083	.68	105	58

STF Dominance T171
HSF Dynamite Y144
Miss CCF Fantasy U18
GWS Ebonys Trademark 6N
ASF Xquisite
ASF Jems Nugget

The opportunities for this heifer as a stand out brood cow are endless. Performance and style permeate from her pedigree making her fit any program. Get yourself a Diamond!



68 **ASF Delissa D33**
Red Dbl Polled Purebred ASA#3140137

BD: 3-30-16 Tattoo: D33
Adj BW: 84 Adj WW: 648



ASF Yulissa Y21, Dam
Sells as Lot 82

CE	BW	WW	YW	ADG	MCE	Milk	MWW	Stay	DOC	CW	YG	Marb	BF	REA	API	TI
7	-.4	45	67	.14	9	24	46	*	8.7	9.4	-.34	.06	-.055	.61	109	57

- FLE Bride Bull
- ASF/TRE Yukon
- ASF Unforgettable
- ASF Windy Daze
- ASF Yulissa
- ASF Ulissa

We love Delissa for her overall muscle pattern and power. If you want a shot of red meat and muscle added to your program while still keeping that nice look, this heifer has you covered!



69 **ASF Candy C34**
Black Dbl Polled Purebred ASA#2971763

BD: 4-9-15 Tattoo: C34 Adj BW: 100 Adj WW: 687

CE	BW	WW	YW	ADG	MCE	Milk	MWW	Stay	DOC	CW	YG	Marb	BF	REA	API	TI
7	5.0	63	89	.16	5	18	49	21	11.3	30.0	-.34	.06	-.085	.65	111	63

- STF Dominance T171
- HSF Dynamite Y144
- Miss CCF Fantasy U18
- ASF Tradewind
- ASF Xanda
- ASF Uffda

If Candy's parents are any indication, she will be a great cow. With a lineage based on style and performance, she will be as sweet as her name suggests. Confirmed bred on May 20 to Hook's Xpection for a 2-27 calf.

A.I. Sire: Hook's Xpection 36X
on 5-20-16 • Due: 2-27-17
EPDs: 12 .25 59 82 .14 8 22 52 * 13.6
Carcass: 18.65 -.37 .33 -.05 .82 136 73
Pasture Sire: ASF Aztec from 5-31 to 8-2-16
Pasture Sire: ASF/TRE Yukon from 8-2 to 9-6-16



70

ASF Carina C22

Black Dbl Polled Purebred ASA#2971775

BD: 3-7-15 Tattoo: C22 Adj BW: 94 Adj WW: 720

CE	BW	WW	YW	ADG	MCE	Milk	MWW	Stay	DOC	CW	YG	Marb	BF	REA	API	TI
5	3.6	58	82	.15	3	21	50	20	11.4	23.8	-.30	.06	-.053	.69	106	61

CCR Red Line 5338U
 ASF Aztec
 ASF Xquisite
 STF Tyrell T761
 ASF Zarina
 ASF Radiance

We can't say enough how excited we are about Carina's future. Her muscle pattern and look are enough to draw you in, but her structure and capacity seal the deal. She's a great example of the progeny of our ASF Aztec bull. Confirmed bred on May 3 to Hook's Xpectation for a 2-10 calving, she just might produce the next great one!

A.I. Sire: Hook's Xpectation 36X on 5-3-16 • Due: 2-10-17
 EPDs: 11 -.45 56 78 .14 7 24 52 * 13.65
 Carcass: 15.55 -.35 .33 -.04 .84 133 72
 Pasture Sire: ASF Aztec from 5-31 to 8-2-16
 Pasture Sire: ASF/TRE Yukon from 8-2 to 9-6-16



71

ASF Cherry C14

Red Dbl Polled Purebred ASA#2971752

BD: 2-23-15 Tattoo: C14 Adj BW: 112 Adj WW: 720

CE	BW	WW	YW	ADG	MCE	Milk	MWW	Stay	DOC	CW	YG	Marb	BF	REA	API	TI
0	8.3	66	92	.17	2	13	46	19	9.6	36.9	-.32	.05	-.084	.66	91	57

STF Dominance T171
 HSF Dynamite Y144
 Miss CCF Fantasy U18
 KenCo/MF Powerline 204L
 ASF Strawberry
 ASF Gabriella

Two words – length and durability. Cherry's ten year old mom is still in the herd producing a calf every year. Confirmed Al'd on May 12 to Hook's Xpectation for a 2-19 calf.

A.I. Sire: Hook's Xpectation 36X on 5-12-16 • Due: 2-19-17
 EPDs: 8 1.9 60 83 .15 6 20 50 * 12.75
 Carcass: 22.1 -.36 .32 -.05 .83 120 70
 Pasture Sire: ASF Aztec from 5-31 to 8-2-16
 Pasture Sire: ASF/TRE Yukon from 8-2 to 9-6-16



72

ASF Chiffon C10

Black Dbl Polled Purebred ASA#2971760

BD: 2-20-15 Tattoo: C10 Adj BW: 90 Adj WW: 735

CE	BW	WW	YW	ADG	MCE	Milk	MWW	Stay	DOC	CW	YG	Marb	BF	REA	API	TI
3	7.2	66	99	.21	5	17	50	23	10.4	39.5	-.29	.04	-.082	.65	106	60

STF Dominance T171
 HSF Dynamite Y144
 Miss CCF Fantasy U18
 STF Tyrell T761
 ASF Whisper
 ASF Satin

You can't make one much more balanced than Chiffon. From front to back, her pattern is constant. When you couple that with her outcross pedigree and breeding, her future is very bright! Estimated breeding date is June 11 for an March 21 calf.

Pasture Sire: ASF Aztec from 5-31 to 8-2-16 • Approx. 6-11 • Due: 3-21-17
 EPDs: 6 4.2 68 100 .20 4 17 51 23 12.05
 Carcass: 35.25 -.28 .03 -.06 .71 115 65
 Pasture Sire: ASF/TRE Yukon from 8-2 to 9-6-16



73 **ASF Celeste C4**
Black Dbl Polled Purebred ASA#2971768

BD: 2-15-15 Tattoo: C4 Adj BW: 96 Adj WW: 680

CE	BW	WW	YW	ADG	MCE	Milk	MWW	Stay	DOC	CW	YG	Marb	BF	REA	API	TI
1	5.7	59	96	.23	2	21	50	*	8.8	36	-.23	.11	-.060	.56	77	59

- FLE Bride Bull
- ASF/TRE Yukon
- ASF Unforgettable
- STF Tyrell T761
- ASF Xuberant
- ASF Starlight

Without a doubt our herd bull, ASF/TRE Yukon is as consistent as they come, and this bred heifer, Celeste, is consistent from head to tail just like her sire. She will take the guesswork out of breeding options as she will work in any scenario. Estimated breeding date is July 4 for an April 13 calf.

Pasture Sire: ASF Aztec from 5-31 to 8-2-16 • Approx. 7-4 • Due: 4-13-17
EPDs: 5 3.45 64 98 .21 7 18 51 * 11.25
Carcass: 33.6 -.25 .06 -.05 .67 92 64
Pasture Sire: ASF/TRE Yukon from 8-2 to 9-6-16

74 **ASF Bedazzle B27**
Red Dbl Polled Purebred ASA#2851155

BD: 3-19-14 Tattoo: B27 Adj BW: 130 Adj WW: 679

CE	BW	WW	YW	ADG	MCE	Milk	MWW	Stay	DOC	CW	YG	Marb	BF	REA	API	TI
-1	8.3	58	71	.08	5	12	41	15	8.0	24.1	-.31	.01	-.097	.40	76	51

- STF Dominance T171
- HSF Dynamite Y144
- Miss CCF Fantasy U18
- ASF Light My Fire
- ASF Sparkler
- ASF Glamor Gal

We're hoping you'll be Bedazzled by this young cow! She has already proven that she produces top notch offspring. Estimated breeding date is June 21 for an March 31 calf.

Pasture Sire: ASF/TRE Yukon from 5-31 to 8-2-16 • Approx. 6-21 • Due: 3-31-17
EPDs: 2 4.4 54 75 .13 7 17 44 * 8.85
Carcass: 20.95 -.29 .06 -.07 .47 85 55



75 **ASF Blue Moon B17**
Black Dbl Polled Purebred ASA#2851158

BD: 2-27-14 Tattoo: B17 Adj BW: 92 Adj WW: 704

CE	BW	WW	YW	ADG	MCE	Milk	MWW	Stay	DOC	CW	YG	Marb	BF	REA	API	TI
2	6.2	63	85	.14	7	19	51	20	8.7	29.1	-.30	.02	-.087	.50	96	59

- STF Dominance T171
- HSF Dynamite Y144
- Miss CCF Fantasy U18
- ASF Ponderosa
- ASF Twilight
- ASF Moonglow

What is the old saying? Only once in a Blue Moon? Well, that's how we feel about this young cow and her mating. Combining her style and femininity with the power and consistency of ASF/TRE Yukon will put money in your pocket from day one. Confirmed bred to ASF/TRE Yukon on May 20 for a Feb 27 calf.

Pasture Sire: ASF/TRE Yukon from 5-31 to 8-2-16 • Confirm 5-20 • Due: 2-27-17
EPDs: 3 3.35 57 82 .16 8 21 49 * 9.2
Carcass: 23.45 -.29 .07 -.07 .52 93 59



ASF Dreamy, Daughter Sells as Lot 62





ASF Daisy D19,
Daughter
Sells as Lot 65

76

ASF Blossom B6

Black Dbl Polled Purebred ASA#2851182

SVF Steel Force S701
HSF Work Force X427
SS Babys Breath P035
STF Tyrell T761
ASF Zarina
ASF Radiance

All of these young cows are hard to part with, and this Work Force cow is no different. Coming from one of our favorite blood lines, we have no doubt Blossom will produce high quality calves for years to come. Her 11 year old grandam continues to do it to this day. Confirmed bred to ASF Aztec (2,727,109) on May 14 for a Feb 21 calf.

BD: 2-15-14 Tattoo: B6 Adj BW: 93 Adj WW: 698

CE	BW	WW	YW	ADG	MCE	Milk	MWW	Stay	DOC	CW	YG	Marb	BF	REA	API	TI
6	3.1	52	73	.13	4	21	47	20	10.6	18.0	-.32	.09	-.055	.67	109	59

Natural Service: ASF Aztec on 5-14-16 • Due: 2-21-17
EPDs: 7 2.15 61 87 .16 4 19 49 22 12.15
Carcass: 24.5 -.30 .05 -.05 .72 116 64
Pasture Sire: ASF/TRE Yukon from 5-31 to 8-2-16

A
MODELS



77

ASF Angel A42

Black Dbl Polled Purebred ASA#2727123

BD: 4-4-13 Tattoo: A42 Adj BW: 80 Adj WW: 694

CE	BW	WW	YW	ADG	MCE	Milk	MWW	Stay	DOC	CW	YG	Marb	BF	REA	API	TI
6	.6	49	81	.20	8	25	50	*	9.7	19.9	-.28	.09	-.054	.58	106	60

FLE Bride Bull
ASF/TRE Yukon
ASF Unforgettable
STF Tyrell T761
ASF Yo Yo
ASF Rainbow

This moderate framed cow packs a big punch when it comes to her overall look. Having already produced high quality calves this early in her career means there is a lot of potential here. Estimated breeding date is June 29 for an April 8 calf.

ASF Divinity D29,
Daughter Sells as
Lot 66

Pasture Sire: ASF/TRE Yukon from 5-31 to 8-2-16 •
Approx. 6-29 • Due: 4-8-17
EPDs: 5 .55 49 80 .19 9 24 48 * 9.7
Carcass: 18.85 -.28 .10 -.05 .56 105 60



78

ASF Awesome Daze A31

Red Dbl Polled Purebred ASA#2727113

BD: 3-9-13 Tattoo: A31 Adj BW: 104 Adj WW: 753

CE	BW	WW	YW	ADG	MCE	Milk	MWW	Stay	DOC	CW	YG	Marb	BF	REA	API	TI
4	5.8	62	83	.13	9	19	50	20	11.7	27.3	-.27	.11	-.074	.47	103	61

STF Dominance T171
HSF Dynamite Y144
Miss CCF Fantasy U18
SAS T101 Sweet Meat
ASF Xtra Daze
ASF Lucky Daze

A very feminine, angular cow that is a joy to look at in the pasture. Her disposition is second to none and her mating with CCR Cowboy Cut should result in an Awesome calf! Confirmed AI'd to CCR Cowboy Cut 5048Z on May 6 for a Feb 13 calf.

A.I. Sire: CCR Cowboy Cut 5048Z on 5-6-16 • Due: 2-13-17
EPDs: 7 3.8 75 103 .18 9 18 55 23 13.45
Carcass: 36.15 -.22 .38 -.04 .71 137 78
Pasture Sire: ASF/TRE Yukon from 5-31 to 8-2-16



ASF Delilah D10,
Daughter Sells as
Lot 63

79

ASF Zu La La Z8

Black Baldy Dbl Polled Purebred ASA#2725329

HTP SVF In Dew Time
SAS T101 Sweet Meat
SAS Sweets Star R101
ASF Ponderosa
ASF U Lala
ASF Louisa

This black baldy cow will catch your eye in an instant. Zu La La's style in addition to her overall shape make her a cow with endless opportunities to shine in the future. Confirmed bred to ASF/TRE Yukon on May 10 for a Feb 17 calf.

BD: 2-21-12 Tattoo: Z8 Adj BW: 88 Adj WW: 727

CE	BW	WW	YW	ADG	MCE	Milk	MWW	Stay	DOC	CW	YG	Marb	BF	REA	API	TI
2	3.6	64	82	.11	9	24	56	19	12.2	23.0	-.22	.10	-.037	.55	102	64

Pasture Sire: ASF/TRE Yukon
from 5-31 to 8-2-16 • Confirm 5-10 • Due: 2-17-17
EPDs: 3 2.05 57 80 .15 9 23 52 * 10.95
Carcass: 20.4 -.25 .11 -.04 .54 100 62

80

ASF Zillow Z30

Red Dbl Polled Purebred ASA#2725332

BD: 3-28-12 Tattoo: Z30 Adj BW: 108 Adj WW: 653

CE	BW	WW	YW	ADG	MCE	Milk	MWW	Stay	DOC	CW	YG	Marb	BF	REA	API	TI
2	7.5	55	85	.18	3	16	44	18	9.8	31.8	-.31	.11	-.056	.78	96	55

Remington Red Label HR
STF Tyrell T761
STF Red Suspicion
Hart Subzero G322
ASF Sweet Licorice
STF Miss Tiffany HC55

Cows like this make being a cattle producer easy. Zillow is always consistent, always puts a good one on the ground, and always has a great disposition. Confirmed AI'd to Hook's Yukon 80Y on May 6 for a Feb 13 calf.

A.I. Sire: Hook's Yukon 80Y on 5-6-16 • Due: 2-13-17
EPDs: 7 4.3 67 96 .18 9 21 55 22 7.65
Carcass: 33.25 -.44 .29 -.05 1.22 129 72
Pasture Sire: ASF/TRE Yukon from 5-31 to 8-2-16



81

ASF Yakira Y1

Black Polled/Scurred Purebred ASA#2616076

BD: 2-4-11 Tattoo: Y1 Adj BW: 89 Adj WW: 767

CE	BW	WW	YW	ADG	MCE	Milk	MWW	Stay	DOC	CW	YG	Marb	BF	REA	API	TI
9	4.7	74	112	.24	3	23	60	28	8.4	43.5	-.19	.00	-.073	.44	128	68

CNS Dream On L186
SVF/NJC Built Right N48
NJC Ebony Antoinette
ASF Ponderosa
ASF Tiara
ASF Angels Halo

Yakira has always been one of our favorites, but her smooth look isn't all she has going for her. She's in the upper 10% of purebreds for weaning, yearling and ADG. Confirmed AI'd to Hook's Yukon 80Y on May 12 for a Feb 19 calf.

A.I. Sire: Hook's Yukon 80Y on 5-12-16 • Due: 2-19-17
EPDs: 10 2.9 76 110 .21 9 25 63 27 6.95
Carcass: 39.1 -.38 .23 -.06 1.05 145 79
Pasture Sire: HSF Dynamite Y144 from 5-27 to 9-6-16





ASF Delissa D33,
Daughter Sells as
Lot 68

82 ASF Yulissa Y21

Red Baldy Dbl Polled Purebred ASA#2628253

BD: 2628253 Tattoo: Y21 Adj BW: 89 Adj WW: 682

CE	BW	WW	YW	ADG	MCE	Milk	MWW	Stay	DOC	CW	YG	Marb	BF	REA	API	TI
9	-6	49	68	.12	10	24	48	22	7.7	9.3	-.38	.00	-.059	.70	117	60

- GWS Ebonys Trademark 6N
- ASF Windy Daze
- ASF Lucky Daze
- Remington Red Label HR
- ASF Ulissa
- ASF Sweet Elissa

It seems that the excitement around red baldy Simmentals continues to increase, and this cow sets you up to capture that uprising. We feel strongly about these genetics and will continue to let them influence our herd for years to come. Confirmed bred to ASF/TRE Yukon on May 22 for a March 2 calf.

Natural Service: ASF/TRE Yukon
on 5-22-16 • Due: 3-1-17

EPDs: 7 -.05 49 73 .15 9 23 48 * 8.7

Carcass: 13.55 -.33 .06 -.06 .62 109 60

Pasture Sire: HSF Dynamite Y144 from 5-27 to 9-6-16



83 ASF Xena X29

Black Baldy Polled Purebred ASA#2584657

BD: 3-15-10 Tattoo: X29 Adj BW: 91 Adj WW: 695

CE	BW	WW	YW	ADG	MCE	Milk	MWW	Stay	DOC	CW	YG	Marb	BF	REA	API	TI
8	1.1	50	70	.12	10	25	51	27	10.9	13.1	-.31	-.06	-.063	.50	119	57

- ASF Ponderosa
- ASF Sunny Daze
- ASF Lucky Daze
- MSR Next Step 8043H
- ASF Prom Queen
- ASF Jennifer

A sharp looking black white-face cow, Xena has consistently produced some of our highest performing calves. We really like what we have seen out of Cowboy Cut so far and have no doubt this mating will produce a good one. Confirmed Al'd to CCR Cowboy Cut 5048Z on May 20 for a 2-27 calf.

A.I. Sire: CCR Cowboy Cut 5048Z on 5-20-16 • Due: 2-27-17

EPDs: 9 1.45 69 97 .17 9 21 56 26 13.05

Carcass: 29.05 -.24 .30 -.03 .73 145 76

Pasture Sire: HSF Dynamite Y144 from 5-27 to 9-6-16



84 ASF Xotic X20

Black Horned Purebred ASA#2584665

BD: 3-2-10 Tattoo: X20 Adj BW: 79 Twin Adj WW: 697

CE	BW	WW	YW	ADG	MCE	Milk	MWW	Stay	DOC	CW	YG	Marb	BF	REA	API	TI
2	3.7	57	85	.18	3	22	51	25	10.5	26.1	-.29	.07	-.055	.69	113	60

- ASF Ponderosa
- ASF Sunny Daze
- ASF Lucky Daze
- KenCo/MF Powerline 204L
- ASF Ritzy
- ASF Gorgeous

This is one of those cows you would like to have a pasture full of. Xotic is solid in her overall make-up and always produces top end, good gaining calves. Cows like this make great profits every year. Confirmed bred to HSF Dynamite Y144 on May 12 for a Feb 19 calf.

Natural Service: HSF Dynamite Y144 on 5-12-16 • Due: 2-19-17

EPDs: 3 6.15 59 80 .14 5 14 44 22 10.4

Carcass: 26.65 -.33 .06 -.08 .58 102 57

Pasture Sire: HSF Dynamite Y144 from 5-27 to 9-6-16

85

ASF Xaltation X2

Red Baldy Polled Purebred ASA#2555033

BD: 2-11-10 Tattoo: X2 Adj BW: 79 Adj WW: 726

CE	BW	WW	YW	ADG	MCE	Milk	MWW	Stay	DOC	CW	YG	Marb	BF	REA	API	TI
6	2.3	61	95	.21	12	30	60	23	9.1	30.0	-.25	-.01	-.066	.50	114	63

- ASF Ponderosa
- ASF Sunny Daze
- ASF Lucky Daze
- WHF Red Doc 940E
- ASF Angels Halo
- Hooks Angelica 4F

A very balanced cow both in terms of her phenotype and EPDs. Xaltation's grandam was a phenomenal cow we purchased from Hook Farms and her granddaughter carries through with many similarities. Confirmed bred to ASF/TRE Yukon on May 25 for a March 4 calf.

Natural Service: ASF/TRE Yukon on 5-25-16 • Due: 3-4-17
 EPDs: 5 1.4 55 87 .20 11 26 53 * 9.4
 Carcass: 23.90 -.26 .05 -.06 .52 105 61
 Pasture Sire: HSF Dynamite Y144 from 5-27 to 9-6-16



86

ASF Wendy W22

Red Baldy Horned Purebred ASA#2527257

BD: 3-5-09 Tattoo: W22 Adj BW: 96 Adj WW: 735

CE	BW	WW	YW	ADG	MCE	Milk	MWW	Stay	DOC	CW	YG	Marb	BF	REA	API	TI
1	4.9	68	110	.26	8	24	58	24	9.6	42.7	-.21	-.07	-.081	.42	104	62

- ASF Ponderosa
- ASF Sunny Daze
- ASF Lucky Daze
- Meysers Red Top
- ASF Lady in Red
- Hooks Angelica 4F

When you look at the genetic makeup of this cow, you can't help but smile seeing Red Top in the lineage. When you look at her phenotype, you can't help but smile at the balance and eye appeal she possesses. A cow like this will work in any operation for many years to come. Confirmed bred to HSF Dynamite Y144 on May 3 for a Feb 10 calf.

Natural Service: HSF Dynamite Y144 on 5-3-16 • Due: 2-10-17
 EPDs: 2 6.75 65 93 .18 7 15 47 21 9.95
 Carcass: 34.95 -.29 -.01 -.10 .45 97 58
 Pasture Sire: HSF Dynamite Y144 from 5-27 to 9-6-16



W
MODELS

REF
SIRE

ASF Aztec A1

Black Dbl Polled Purebred ASA#2727109

BD: 2-9-13 Tattoo: A1 Adj BW: 88 Adj WW: 813

CCR Red Line 5338U x ASF Xquisite

CE	BW	WW	YW	ADG	MCE	Milk	MWW	Stay	DOC	CW	YG	Marb	BF	REA	API	TI
9	1.2	70	100	.19	3	16	51	23	13.7	31.0	-.27	.01	-.043	.77	123	70



A1

REF
SIRE

ASF/TRE Yukon Y31

Black Dbl Polled 3/4 SM 1/4 AN ASA#2628254

BD: 3-23-11 Tattoo: Y31 Adj BW: 95 Adj WW: 726

FLE Bride Bull x ASF Unforgettable

CE	BW	WW	YW	ADG	MCE	Milk	MWW	Stay	DOC	CW	YG	Marb	BF	REA	API	TI
4	.5	50	78	.18	9	22	47	*	9.7	17.8	-.27	.11	-.052	.53	99	58



Y31

REF
SIRE

HSF Dynamite Y144

Red Dbl Polled Purebred ASA#2623822

BD: 2-27-11 Tattoo: Y144 Adj BW: 105 ET Adj WW: 676

STF Dominance T171 x Miss CCF Fantasy U18

CE	BW	WW	YW	ADG	MCE	Milk	MWW	Stay	DOC	CW	YG	Marb	BF	REA	API	TI
3	8.6	62	76	.09	7	6	37	18	10.3	27.2	-.36	.05	-.11	.47	90	54



Y144

Make it a Simmental Weekend!

Jewels of the Northland Sale in
 Clara City, MN on December 3rd & our Dakota
 Made Sale on December 5th!

Trucking will be coordinated between the two
 sales for your convenience.

Selling 86 Lots on Monday
December 5th

12:00 Noon Sharp!
Eichacker Sale Facility
Salem, South Dakota



Dakota Made 2016

SIMMENTAL
SIMANGUS™
RED ANGUS



Eberspacher
ENTERPRISES INC.

2904 County Road 6
Marshall, MN 56258

First Class Mail: Time Dated Material!

First Class
U.S. Postage
PAID
Permit #86
Marshall, MN